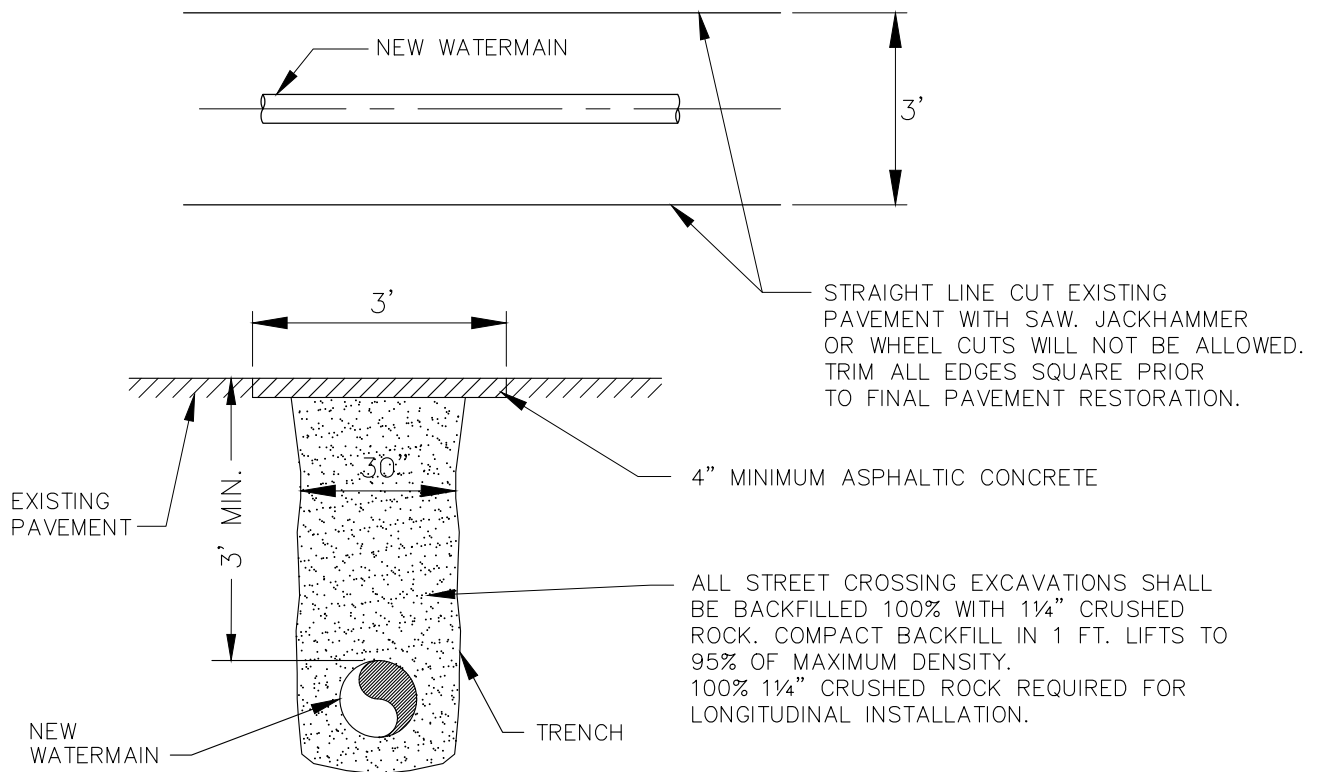
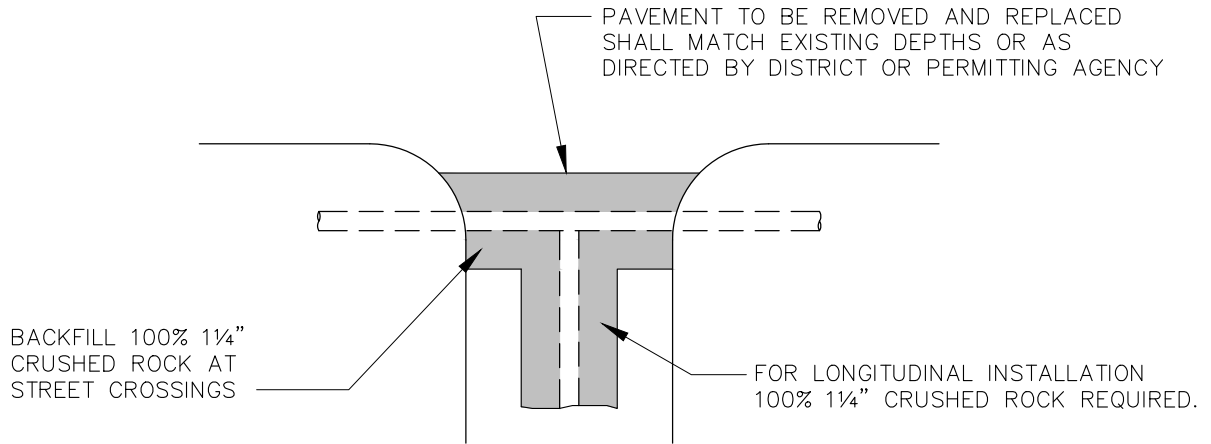


NOTES:

1. NATIVE MATERIAL NOT APPROVED FOR BACKFILL.
2. NO RECYCLED MATERIAL ALLOWED.



SECTION

PAVEMENT RESTORATION

SHEET 1 OF 2



PACE Engineers
11255 Kirkland Way, Suite 300
Kirkland, WA 98033
p. 425.827.2014
www.paceengrs.com

**STANDARD DETAIL
RESTORATION**

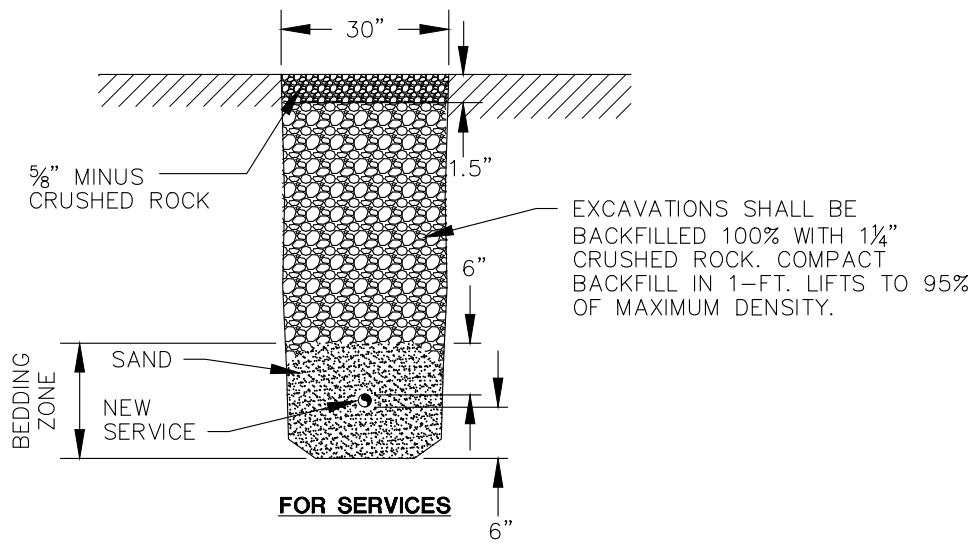
PLOTTING DATE 9-19-23	DRAWN	CHECKED	APPROVED	DISTRICT
PLOTTING SCALE NTS	FILE NAME W-DTL-01	DATE APPROVED		



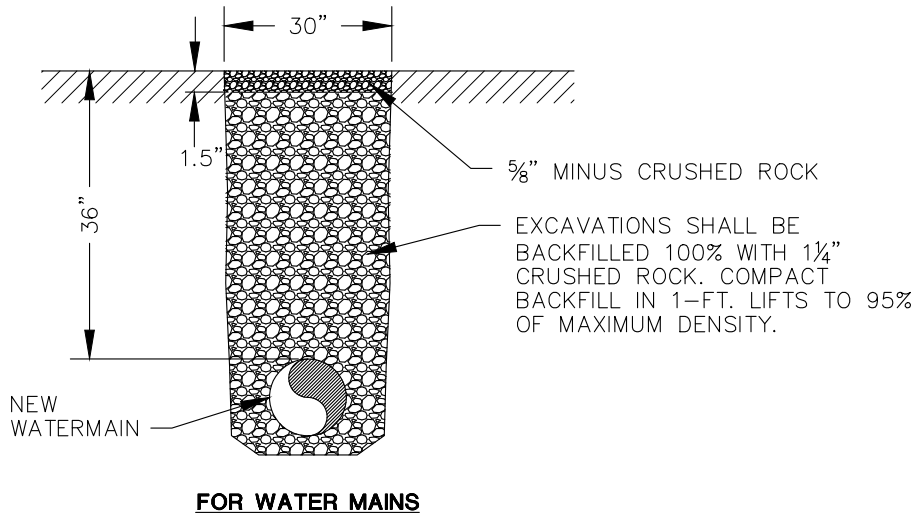
DWG. NO. W-01

FILE NAME: L:\CAD\DETAILS\Districts\WD_20\Std_Details\W-DTL-01.dwg
USER: Aaron Jackson
PLOTTING DATE: 10/4/2023 1:55 PM

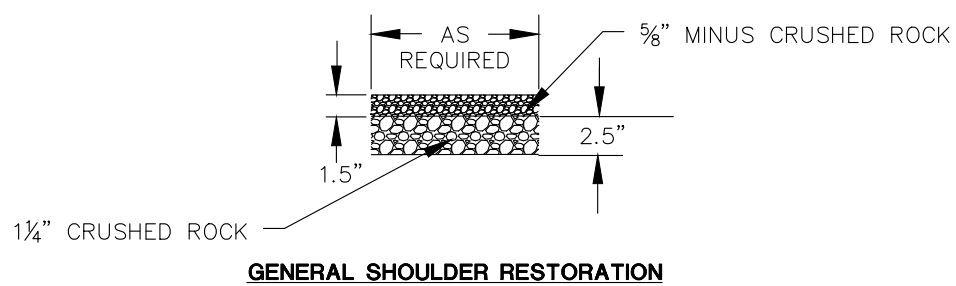
FILE NAME: L:\CAD\DETAILS\Districts\WD_20\Std_Details\W-DTL-01.dwg
 USER: Aaron Jackson
 PLOTTING DATE: 10/4/2023 1:55 PM



EXCAVATIONS SHALL BE BACKFILLED 100% WITH 1/4" CRUSHED ROCK. COMPACT BACKFILL IN 1-FT. LIFTS TO 95% OF MAXIMUM DENSITY.



EXCAVATIONS SHALL BE BACKFILLED 100% WITH 1/4" CRUSHED ROCK. COMPACT BACKFILL IN 1-FT. LIFTS TO 95% OF MAXIMUM DENSITY.



GRAVEL SHOULDER RESTORATION

SHEET 2 OF 2



PACE Engineers
 11255 Kirkland Way, Suite 300
 Kirkland, WA 98033
 p. 425.827.2014
 www.paceengrs.com

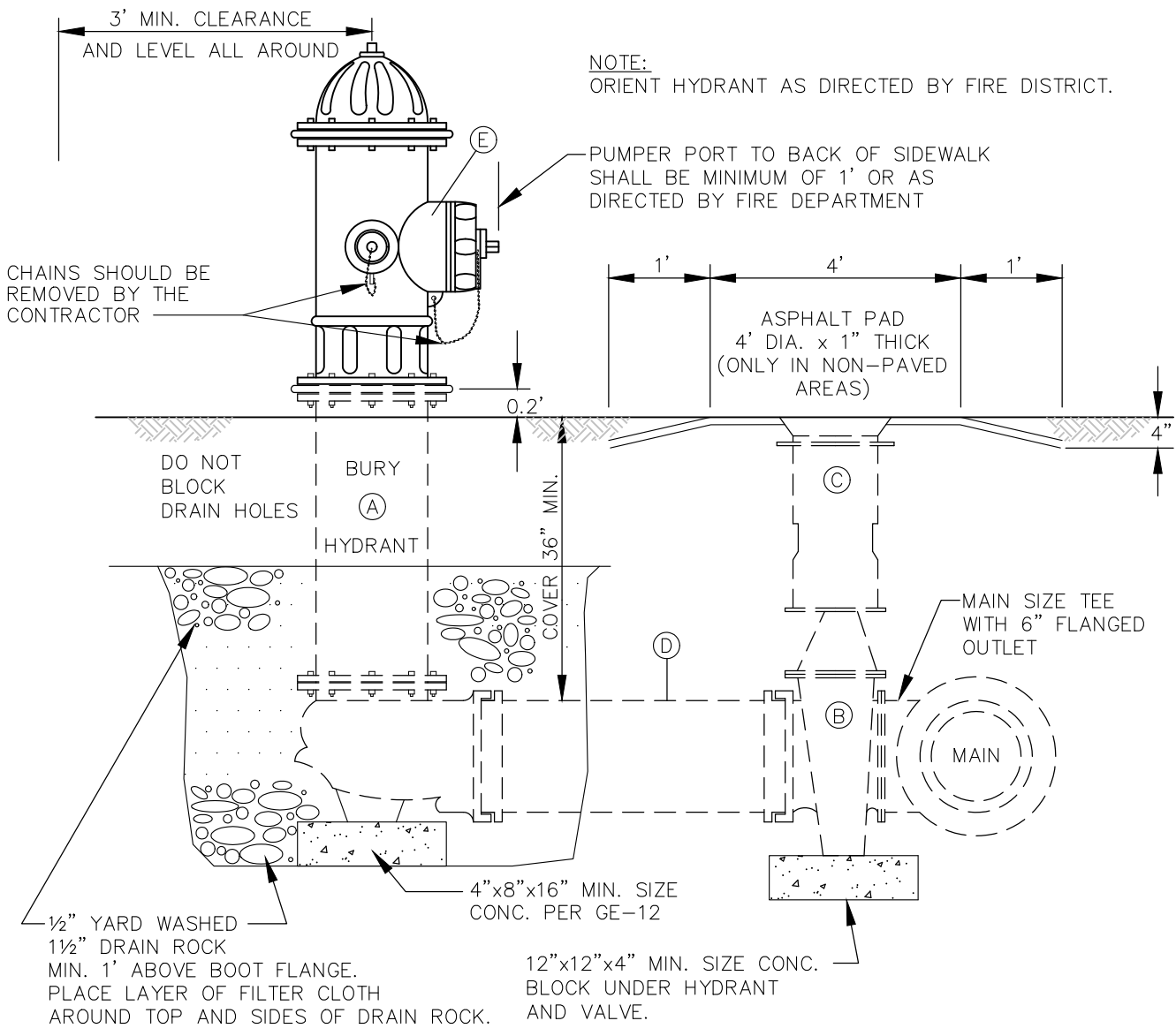
**STANDARD DETAIL
GENERAL RESTORATION**

PLOTTING DATE 12-27-21	DRAWN	CHECKED	APPROVED	DISTRICT
PLOTTING SCALE NTS	FILE NAME W-DTL-01	DATE APPROVED		



DWG. NO. W-01(2)

FILE NAME: L:\CAD\DETAILS\Districts\WD_20\Std_Details\W-DTL-02.dwg
 PLOTTING DATE: 9/20/2023 7:49 AM
 USER: Aaron Jackson



- A. 1-5 1/4" MUELLER CENTURION 250, M&H 929 OR M&H 129 HYDRANT WITH 2-2 1/2" N.S.T. AND 1-4" SEATTLE STANDARD THREAD-M.J. INLET, WITH LUGS, BRASS SUB-SEAT AND STORTZ ADAPTER.
- B. 1-AUXILIARY GATE VALVE: 6" AWWA C509, RESILIENT SEAT, "O" RING STEM SEAL, M.J.xFL, WITH LUGS.
- C. 1-TWO-PIECE CAST IRON VALVE BOX WITH LID STAMPED "WATER".
- D. 1-6" DUCTILE IRON CLASS 52 CEMENT-LINED PIPE, LENGTH TO FIT. WHERE MORE THAN ONE LENGTH OF PIPE IS REQUIRED, CONNECT PIPES WITH MECHANICAL JOINT SLEEVE, RESTRAIN PIPE AND SLEEVE WITH MEGALUG RESTRAINERS, OR FIELD-LOK GASKETS.
- E. 5" X 4" FEMALE SEATTLE STANDARD THREAD RIGID STORTZ ADAPTER WITH ALL CAPS AND CHAINS OR CABLES. ADAPTER MATERIAL TO BE ANODIZED ALUMINUM.

NOTES:

- 1. FIRE HYDRANT EXTENSION, IF REQUIRED.
- 2. FIRE HYDRANT TO BE PAINTED WITH TWO COATS OF SHERWIN WILLIAMS SHER-KEM FAST DRY METAL FINISHING ENAMEL, COLOR 8156-70319 FW SAFETY YELLOW.
- 3. ALL HYDRANT RUNS PIPE JOINTS SHALL BE RESTRAINED. USE MEGALUG JOINT RESTRAINTS AND LOCKING GASKETS OR RESTRAINED JOINT PIPE.
- 4. HYDRANT RUNS OVER 50' TO BE 8" D.I.



PACE Engineers
 11255 Kirkland Way, Suite 300
 Kirkland, WA 98033
 p. 425.827.2014
 www.paceengrs.com

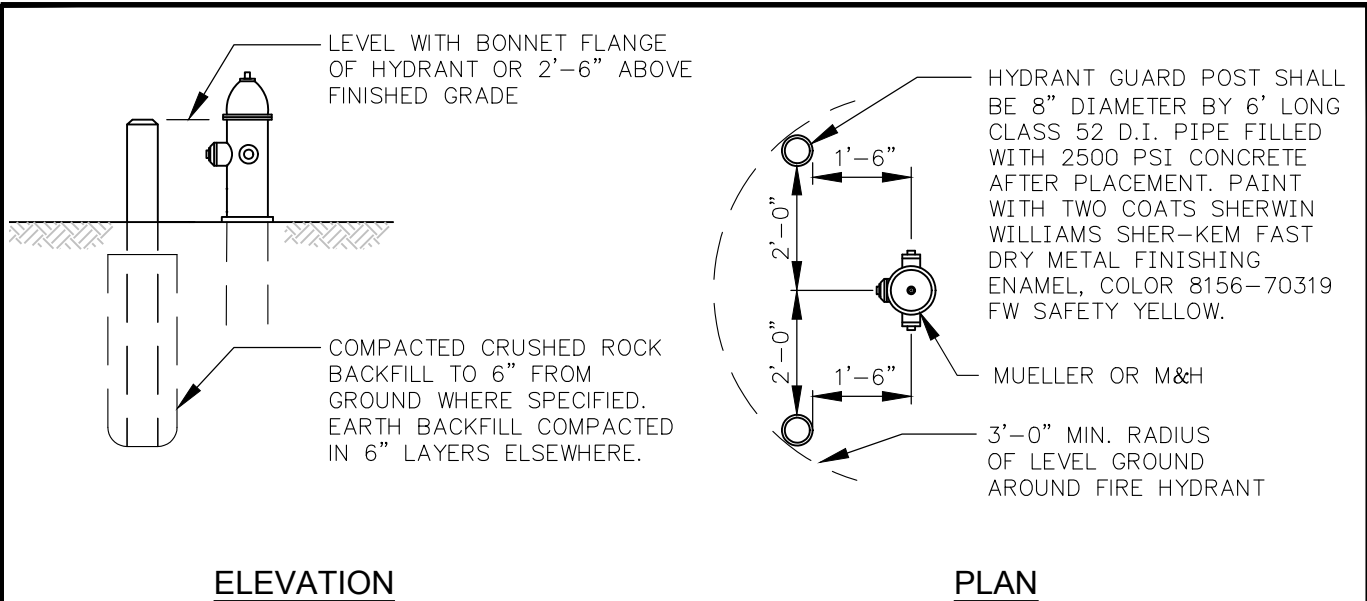
STANDARD DETAIL SHORT SIDE FIRE HYDRANT ASSEMBLY

PLOTING DATE 9-19-23	DRAWN LC	CHECKED PP	APPROVED	DISTRICT
PLOTING SCALE NTS	FILE NAME W-DTL-02	DATE APPROVED		



20

DWG. NO. W-02

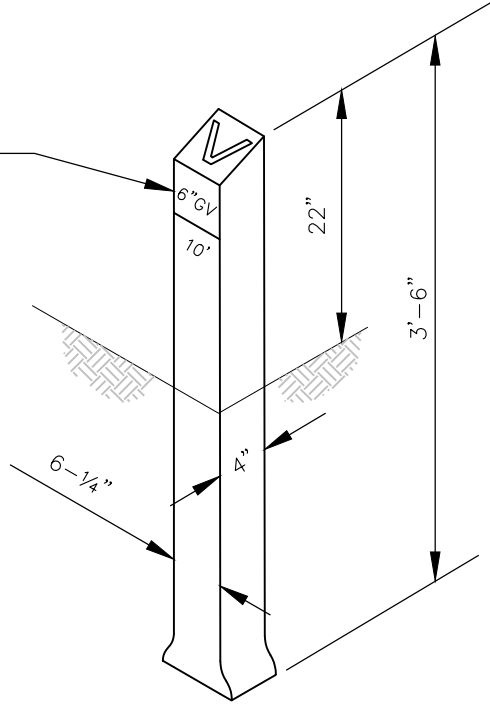


ELEVATION

PLAN

FIRE HYDRANT GUARD POST

VALVE MARKER POST SHALL BE EQUAL TO FOG-TITE METER CO. PAINT SHALL BE SAME AS FIRE HYDRANT. PAINT DISTANCE FROM THE VALVE MARKER TO THE VALVE ON THE POST WITH NEATLY STENCILED BLACK ENAMEL NUMBERS, 2" IN HEIGHT.



VALVE MARKER POST

NOTES:

1. GUARD POSTS TO BE INSTALLED ONLY AS DIRECTED BY KING COUNTY WATER DISTRICT NO. 20.
2. VALVE MARKERS TO BE USED FOR BLOW OFF AND MAINLINE VALVES OUTSIDE PAVED AREAS.

PLOTTING DATE: 9/19/2023 10:04 AM
 USER: Aaron Jackson
 FILE NAME: L:\CAD\DETAILS\Districts\WD_20\Std_Details\W-DTL-03.dwg



PACE Engineers
 11255 Kirkland Way, Suite 300
 Kirkland, WA 98033
 p. 425.827.2014
 www.paceengrs.com

**STANDARD DETAIL
 FIRE HYDRANT GUARD POST
 AND VALVE MARKER POST**

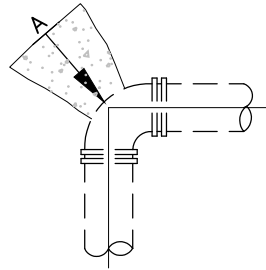
PLOTTING DATE 10-19-23	DRAWN LC	CHECKED PP	APPROVED	DISTRICT
PLOTTING SCALE NTS	FILE NAME W-DTL-03	DATE APPROVED		



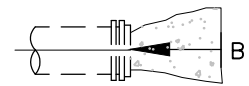
DWG. NO. W-03

THRUST BLOCK - TABLE

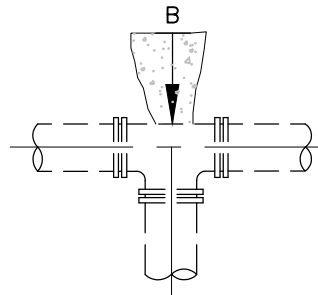
MINIMUM BEARING AREA AGAINST UNDISTURBED SOIL SQUARE FEET						
PIPE SIZE	A	B	C	D	E	X (100 PSI)
4"	3	2	2	2	2	NONE
6"	4	4	2	2	2	NONE
8"	7	6	4	2	2	4
10"	11	10	6	3	2	6
12"	16	14	9	5	3	9
14"	22	19	12	6	3	12
16"	29	25	16	8	4	16
18"	36	31	20	10	5	20
20"	45	39	24	13	6	24
22"	54	47	29	15	8	29
24"	64	56	35	18	9	35



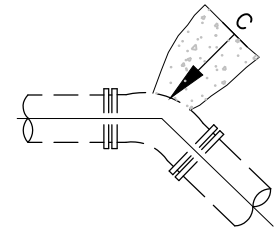
90° BEND



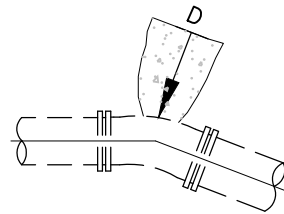
CAP



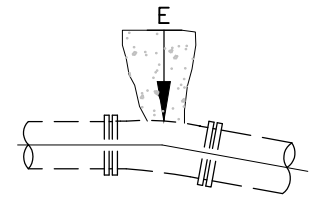
TEE



45° BEND

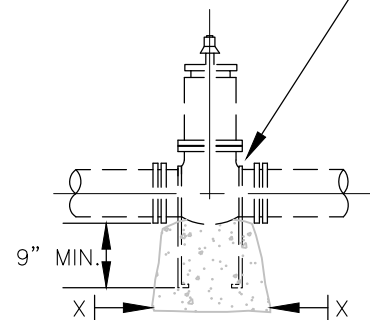


22 1/2° BEND



11 1/4° BEND

2 - 1/2" DIA. RODS FOR 10" SIZE & SMALLER
2 - 1" DIA. RODS LARGER THAN 10" SIZE



GATE VALVE

NOTES:

1. BEARING AREA CONCRETE THRUST-BLOCK BASED ON 200 PSI PRESSURE AND SAFE SOIL BEARING LOAD OF 2000 POUNDS PER SQUARE FOOT.
2. AREAS MUST BE ADJUSTED FOR OTHER SIZE PIPE, PRESSURES & SOIL CONDITIONS.
3. CONCRETE BLOCKING SHALL BE CAST IN PLACE & HAVE MINIMUM OF 1¼ SQUARE FOOT BEARING AGAINST THE FITTING AND BE POURED AGAINST FIRM UNDISTURBED SOIL.
4. BLOCK SHALL BEAR AGAINST FITTINGS ONLY & SHALL BE CLEAR OF JOINTS TO PERMIT TAKING UP OR DISMANTLING JOINT.
5. CONTRACTOR SHALL INSTALL BLOCKING ADEQUATE TO WITHSTAND FULL TEST PRESSURE AS WELL AS TO CONTINUOUSLY WITHSTAND OPERATING PRESSURE UNDER ALL CONDITIONS OF SERVICE.
6. CONTRACTOR TO PROVIDE 4 MIL MIN. THICKNESS POLYETHYLENE SHEET BETWEEN CONCRETE BLOCK AND FITTING.
7. 2X2X3 HALF-SIZE ECOLOGY BLOCKS MAY BE SUBSTITUTED AS APPROVED BY THE DISTRICT.

NOTES:

ADDITIONAL BLOCKING MUST BE PROVIDED IF GATE VALVE IS AT END OF LINE DURING TESTING.

FILE NAME: L:\CAD\DETAILS\Districts\WD_20\Std_Details\W-DTL-04.dwg
PLOT DATE: 9/19/2023 10:04 AM USER: Aaron Jackson



PACE Engineers
11255 Kirkland Way, Suite 300
Kirkland, WA 98033
p. 425.827.2014
www.paceengrs.com

STANDARD DETAIL HORIZONTAL CONCRETE BLOCKING

PLOTTING DATE 3-06-19	DRAWN LC	CHECKED PP	APPROVED	DISTRICT
PLOTTING SCALE NTS	FILE NAME W-DTL-04	DATE APPROVED		



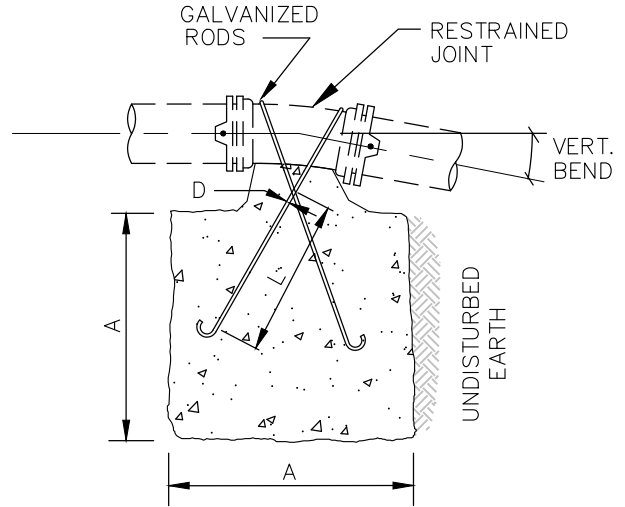
DWG. NO. W-04

PLOTTING DATE: 9/19/2023 10:04 AM USER: Aaron Jackson FILE NAME: L:\CAD\DETAILS\Districts\WD_20\Std_Details\W-DTL-05.dwg

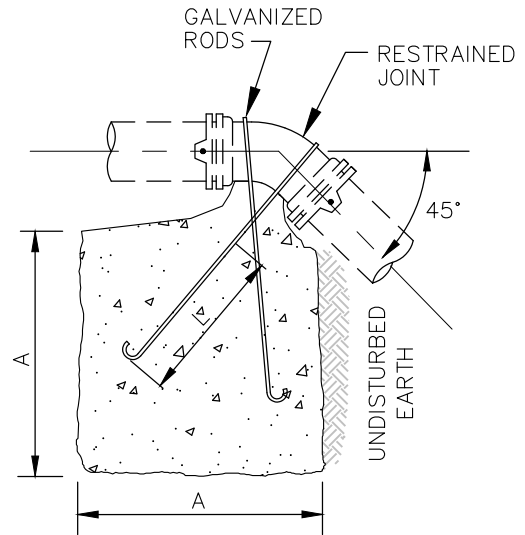
VERTICAL BLOCKING FOR 11 1/4°-22 1/2°-30° BENDS					
PIPE SIZE	V B	CU FT	A	D	L
4"	11 1/4°	8	2.0'	3/4"	1.5'
	22 1/2°	11	2.2'		2.0'
	30°	17	2.6'		
6"	11 1/4°	11	2.2'	3/4"	2.0'
	22 1/2°	25	2.9'		
	30°	41	3.5'		
8"	11 1/4°	16	2.5'	3/4"	2.0'
	22 1/2°	47	3.6'		
	30°	70	4.1'	3/4"	2.5'
12"	11 1/4°	32	3.2'	3/4"	2.0'
	22 1/2°	88	4.5'		
	30°	132	5.1'		
16"	11 1/4°	70	4.1'	7/8"	3.0'
	22 1/2°	184	5.7'		
	30°	275	6.5'	1 1/4"	
20"	11 1/4°	91	4.5'	7/8"	3.0'
	22 1/2°	225	6.1'		
	30°	330	6.9'	1 3/8"	4.5'
24"	11 1/4°	128	5.0'	1"	3.5'
	22 1/2°	320	6.8'		
	30°	480	7.9'	1 5/8"	5.5'
VERTICAL BLOCKING FOR 45° BENDS					
4"	45°	30	3.1'	3/4"	2.0'
6"		68	4.1'		
8"		123	5.0'		
12"		232	6.1'	3/4"	2.5'
16"		478	7.8'	1 1/8"	4.0'
20"		560	8.2'	1 1/4"	
24"	820	9.4'	1 3/8"	4.5'	

NOTES:

1. CONCRETE BLOCKING BASED ON 200 PSI PRESSURE AND 2500 PSI CONCRETE.



VERTICAL BLOCKING FOR 11 1/4°, 22 1/2°, & 30° BENDS



VERTICAL BLOCKING FOR 45° BENDS



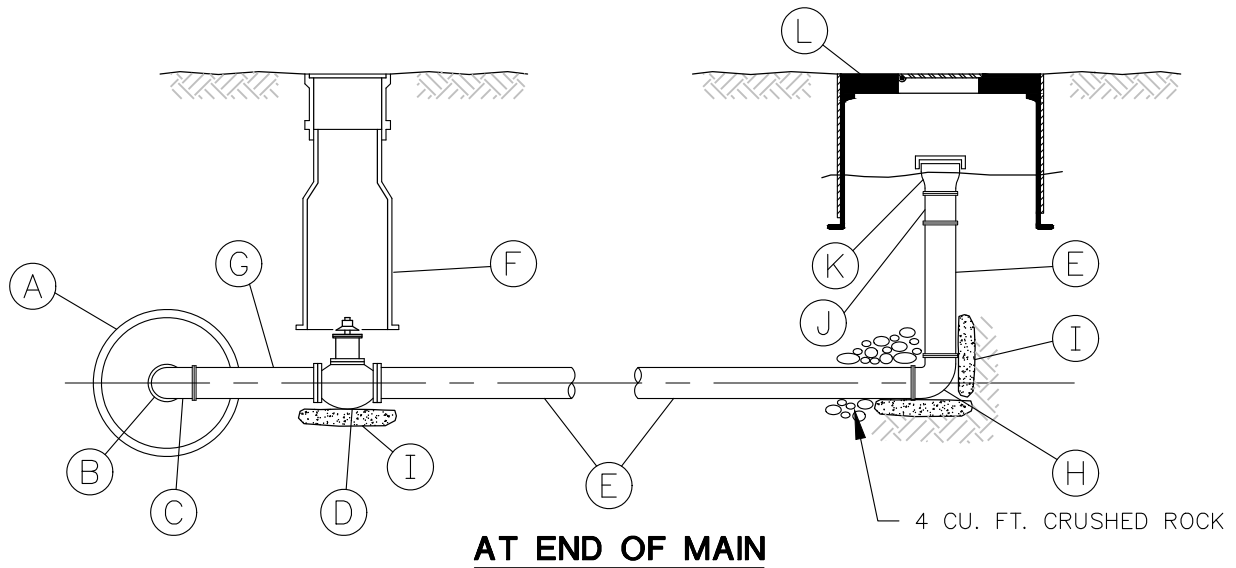
PACE Engineers
 11255 Kirkland Way, Suite 300
 Kirkland, WA 98033
 p. 425.827.2014
 www.paceengrs.com

STANDARD DETAIL VERTICAL CONCRETE BLOCKING

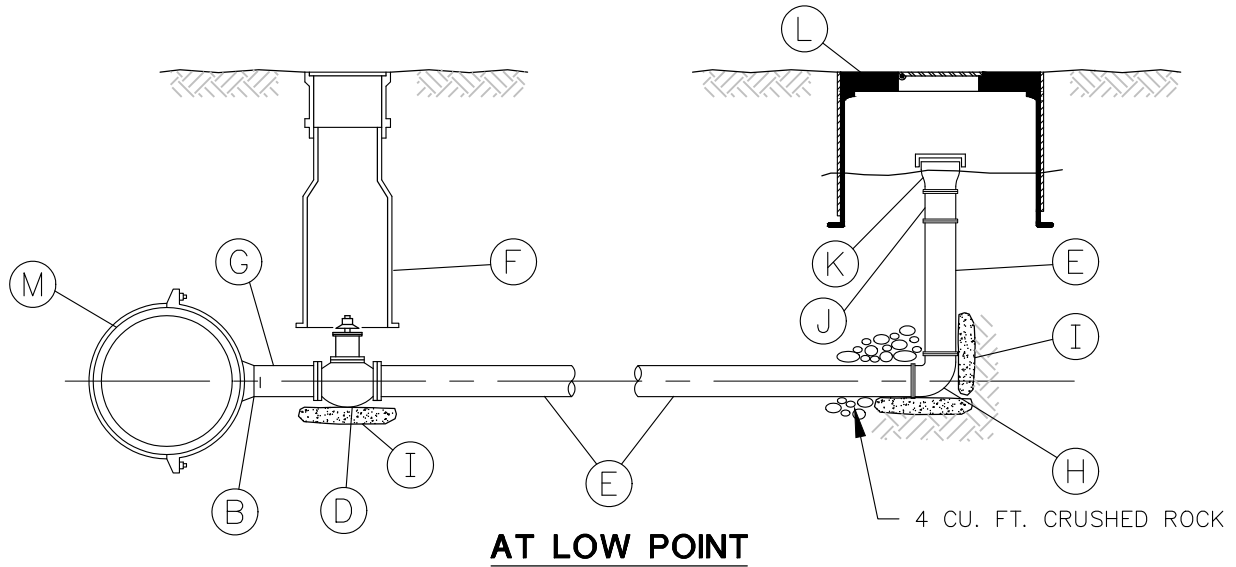
PLOTTING DATE 3-06-19	DRAWN	CHECKED	APPROVED	DISTRICT
PLOTTING SCALE NTS	FILE NAME W-DTL-05	DATE APPROVED		



DWG. NO. W-05



AT END OF MAIN



AT LOW POINT

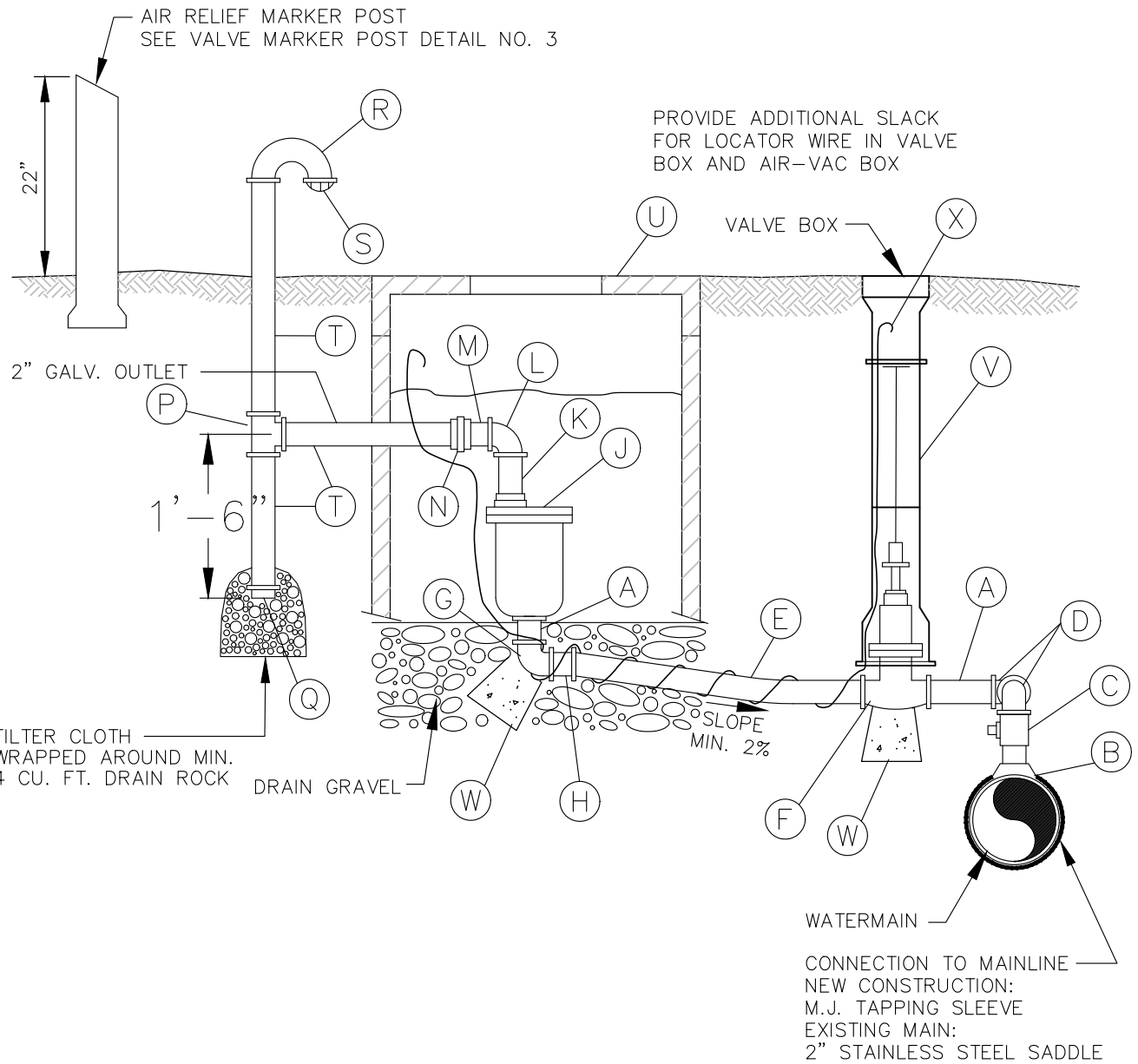
FILE NAME: L:\CAD\DETAILS\Districts\WD_20\Std_Details\W-DTL-06.dwg USER: Aaron Jackson PLOTTING DATE: 10/19/2023 9:10 AM

MARK	QUANTITY	ITEM DESCRIPTION
A	1	CAST IRON CAP OR PLUG WITH 2" I.P.T. TAP
B	1	2" CLOSE NIPPLE - BRASS
C	1	2" 90° ELBOW - THREADED - BRASS
D	1	2" GATE VALVE - RESILIENT SEAT
E	2	2" GALV. IRON PIPE - LENGTH AS REQUIRED
F	1	VALVE BOX
G	1	2" BRASS PIPE - 12" TO 18" LONG; INSTALL SWING JOINT IF REQUIRED
H	1	2" 90° ELBOW WITH 1/4" DRAIN HOLE - THREADED - GALV.
I	3	CONCRETE THRUST BLOCK - POURED IN PLACE
J	1	2" ADAPTER - F.I.P. x F.I.P. - GALV.
K	1	2" M.I.P. x 2 1/2" M.I.P. HOSE CONNECTION AND 2 1/2" CAP
L	1	MID-STATES METER BOX AND LID 1324-18
M	1	2" WET TAPPING TEE

**STANDARD DETAIL
BLOW-OFF ASSEMBLY**

PLOTTING DATE 10-19-23	DRAWN LC	CHECKED PP	APPROVED	DISTRICT
PLOTTING SCALE NTS	FILE NAME W-DTL-06	DATE APPROVED		

PLOTTING DATE: 9/20/2023 7:50 AM USER: Aaron Jackson FILE NAME: L:\CAD\DETAILS\Districts\WD_20\Std_Details\W-DTL-07&08.dwg



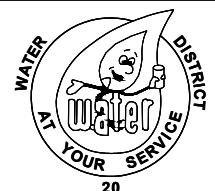
SHEET 1 OF 2



PACE Engineers
 11255 Kirkland Way, Suite 300
 Kirkland, WA 98033
 p. 425.827.2014
 www.paceengrs.com

STANDARD DETAIL AIR VACUUM AND RELIEF VALVE ASSEMBLY

PLOTTING DATE	DRAWN	CHECKED	APPROVED	DISTRICT
9-19-23	LC	PP		
PLOTTING SCALE	FILE NAME			DATE APPROVED
NTS	W-DTL-07&08			



20

DWG. NO. W-07

AIR AND VACUUM RELIEF MATERIAL

MARK	QUANTITY	ITEM DESCRIPTION
A	2	2" BRASS NIPPLE, LENGTH AS REQUIRED
B	1	M.J. TAPPING SLEEVE ON NEW MAIN OR FORD DOUBLE STRAP STAINLESS STEEL SADDLE
C	1	2" FORD CORP STOP FB1600 AWWA x F.I.P.
D	2	2" BRASS 90° STREET ELBOW (2 REQUIRED)
E	1	2" HDPE DR 9 CTS 200 PSI ASTM D2737 WITH 14 GAUGE LOCATING WIRE
F	1	2" RESILIENT SEAT GATE VALVE WITH 2" OPERATING NUT AND VALVE BOX
G	1	2" BRASS 90° BEND F.I.P. x F.I.P.
H	1	2" BRASS ADAPTER FORD C84 PACK x MIP
J	1	2" APCO AIR-VAC VALVE 145C
K	1	2" GALV. IRON PIPE - LENGTH = 6" OR LENGTH NEEDED
L	1	2" GALV. IRON 90° ELBOW
M	1	2" GALV. NIPPLE, LENGTH = 3"
N	1	2" GROUND JOINT UNION, GRINNEL FIG. 463
P	1	2" GALV. TEE
Q	1	2" GALV. CAP
R	1	2" GALV. RETURN BEND, OPEN PATTERN, PAINT BLUE ABOVE SUBGRADE
S	1	2" BEEHIVE STRAINER
T	3	2" GALV. IRON PIPE, LENGTH AS REQUIRED, PAINT BLUE ABOVE SUBGRADE
U	1	MID-STATES METER BOX 1730-18 WITH LID
V	1	VALVE BOX WITH LID
W	2	4"x4"x8" BRICK AGAINST UNDISTURBED SOIL
X	LENGTH AS REQ.	TRACING WIRE - 14 GAUGE SOLID COPPER WIRE WITH NEOPRENE COATING

SHEET 2 OF 2



PACE Engineers
11255 Kirkland Way, Suite 300
Kirkland, WA 98033
p. 425.827.2014
www.paceengrs.com

STANDARD DETAIL AIR VACUUM AND RELIEF VALVE ASSEMBLY

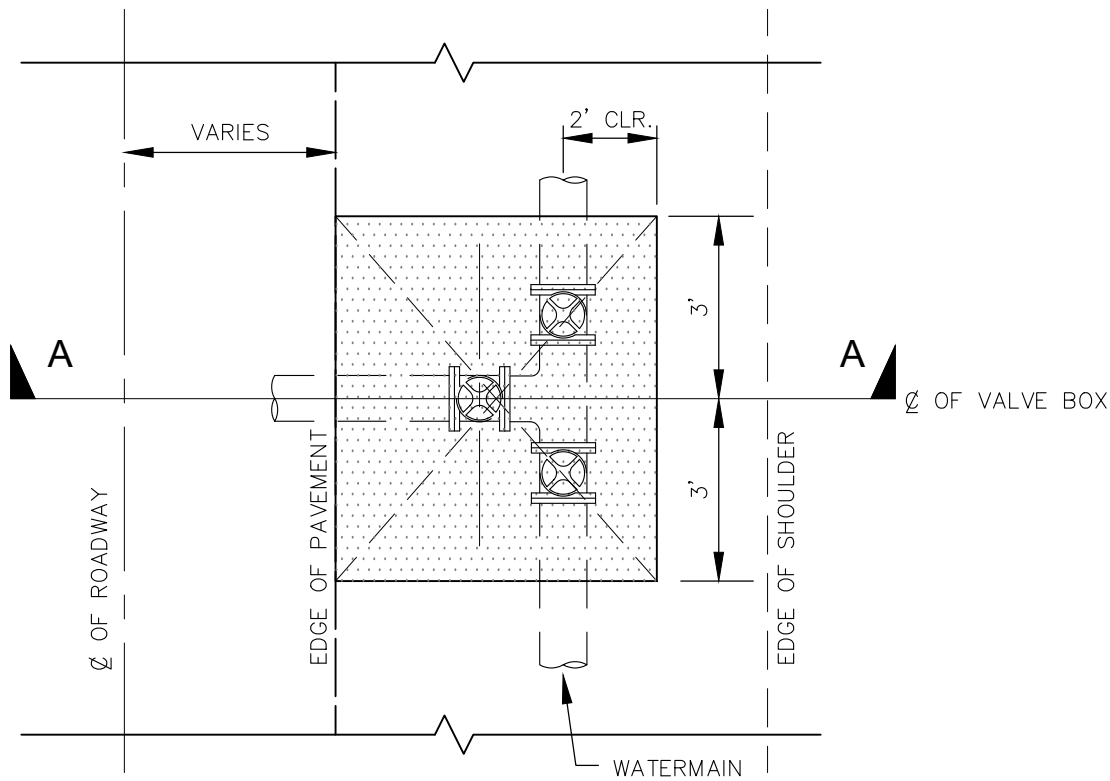
PLOTTING DATE 9-19-23	DRAWN LC	CHECKED PP	APPROVED	DISTRICT
PLOTTING SCALE NTS	FILE NAME W-DTL-07&08	DATE APPROVED		



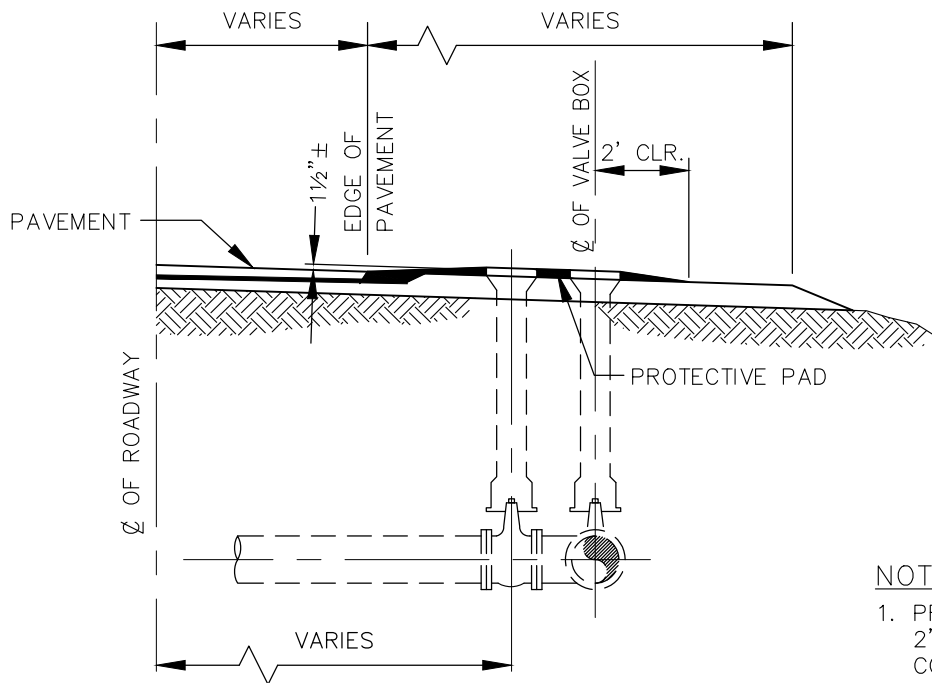
DWG. NO. W-08

PLOTTING DATE: 9/20/2023 7:50 AM USER: Aaron Jackson FILE NAME: L:\CAD\DETAILS\Districts\WD_20\Std_Details\W-DTL-07&08.dwg

PLOTTING DATE: 9/19/2023 10:05 AM USER: Aaron Jackson FILE NAME: L:\CAD\DETAILS\Districts\WD_20\Std_Details\W-DTL-09.dwg



PLAN



SECTION A-A

NOTES:

1. PROTECTIVE PAD SHALL BE 2" CLASS 'B' ASPHALTIC CONCRETE.
2. TOE OF PROTECTIVE PAD SHALL MATCH ADJACENT GRADE.



PACE Engineers
 11255 Kirkland Way, Suite 300
 Kirkland, WA 98033
 p. 425.827.2014
 www.paceengrs.com

STANDARD DETAIL VALVE BOX PROTECTIVE PAD

PLOTING DATE 03-06-19	DRAWN	CHECKED	APPROVED	DISTRICT
PLOTING SCALE NTS	FILE NAME W-DTL-09		DATE APPROVED	

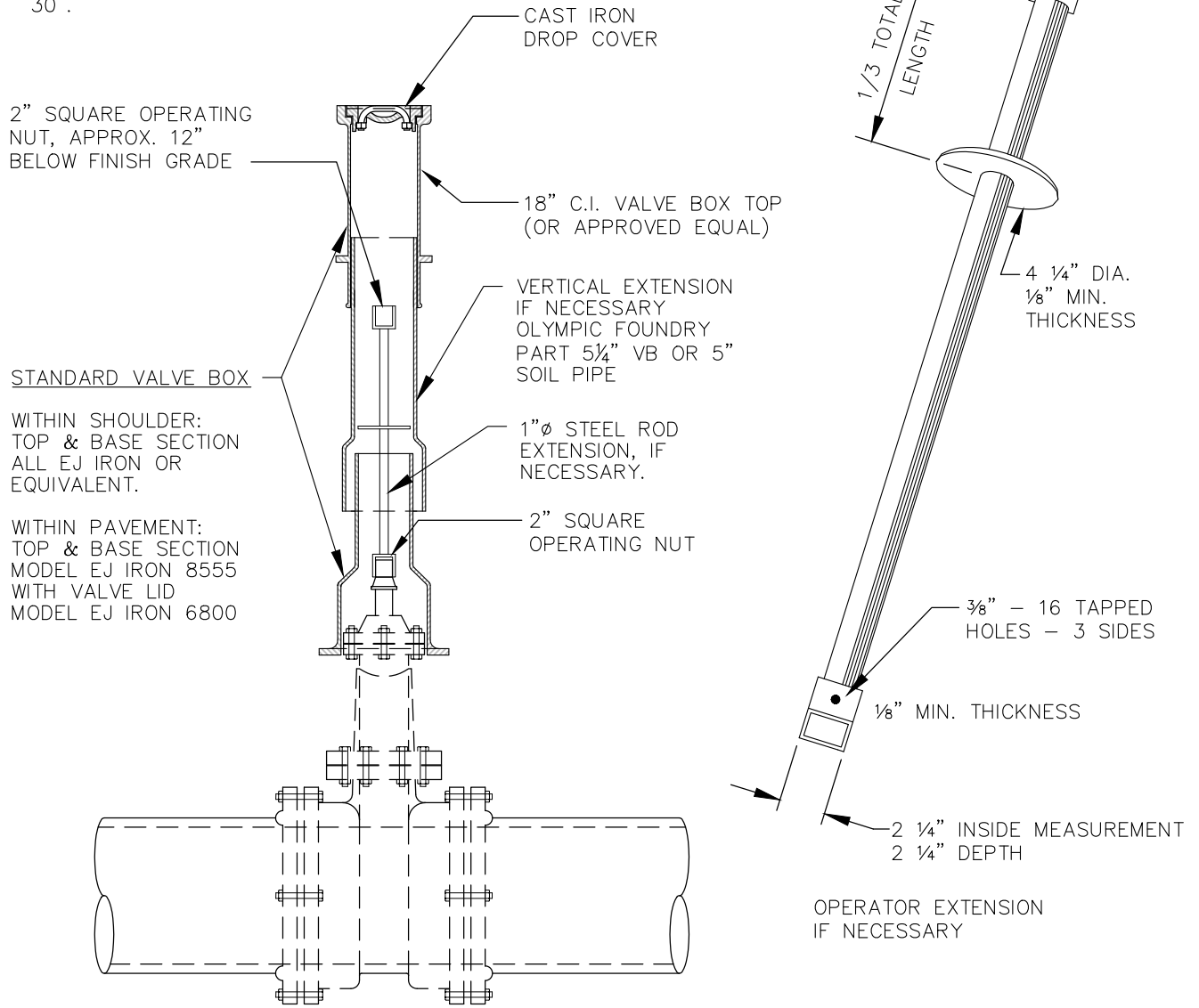


20

DWG. NO. W-09

NOTE:

VALVE EXTENSION SHALL BE INSTALLED WHEN DISTANCE BETWEEN FINISH GRADE AND TOP OF VALVE NUT EXCEEDS 30".



2" SQUARE OPERATING NUT, APPROX. 12" BELOW FINISH GRADE

STANDARD VALVE BOX

WITHIN SHOULDER: TOP & BASE SECTION ALL EJ IRON OR EQUIVALENT.

WITHIN PAVEMENT: TOP & BASE SECTION MODEL EJ IRON 8555 WITH VALVE LID MODEL EJ IRON 6800

VALVE OPERATING NUT EXTENSION

LENGTH AS REQUIRED TO PUT OPERATING NUT, APPROXIMATELY 12" FROM SURFACE. EXTENSIONS ARE REQUIRED WHEN THE VALVE NUT IS MORE THAN THREE (3) FEET BELOW FINISHED GRADE. EXTENSIONS ARE TO BE A MINIMUM OF ONE (1) FOOT LONG. ONLY ONE EXTENSION TO BE USED PER VALVE.

NOTE:

1. ALL EXTENSIONS ARE TO BE MADE OF STEEL, SIZED AS NOTED, AND PAINTED WITH TWO COATS OF METAL PAINT.

FILE NAME: L:\CAD\DETAILS\Districts\WD_20\Std_Details\W-DTL-10.dwg

USER: Aaron Jackson

PLOT DATE: 10/4/2023 9:16 AM



PACE Engineers
11255 Kirkland Way, Suite 300
Kirkland, WA 98033
p. 425.827.2014
www.paceengrs.com

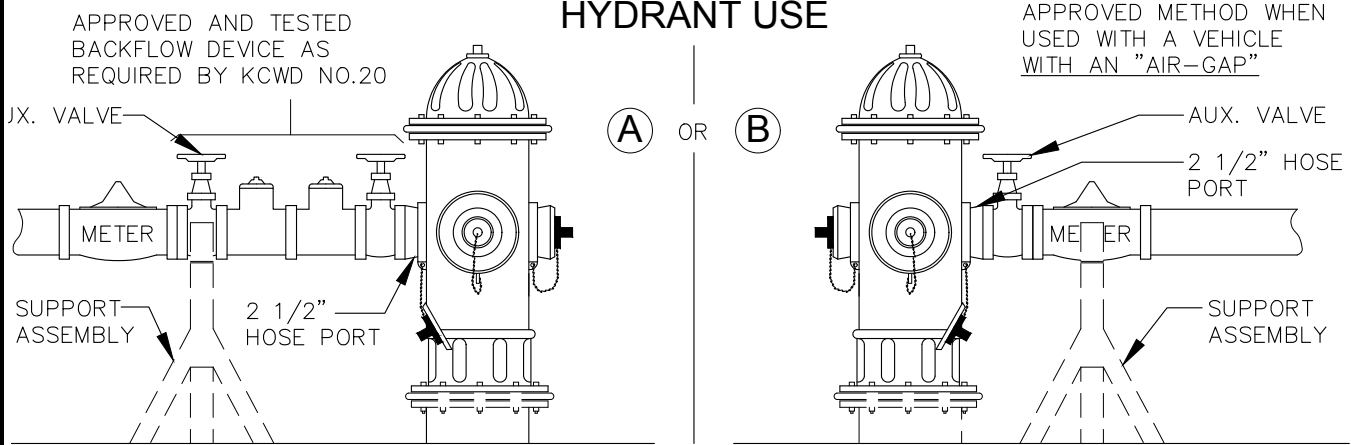
**STANDARD DETAIL
VALVE BOX AND
VALVE OPERATING EXTENSION**

PLOTTING DATE 9-19-23	DRAWN	CHECKED	APPROVED	DISTRICT
PLOTTING SCALE NTS	FILE NAME W-DTL-10	DATE APPROVED		



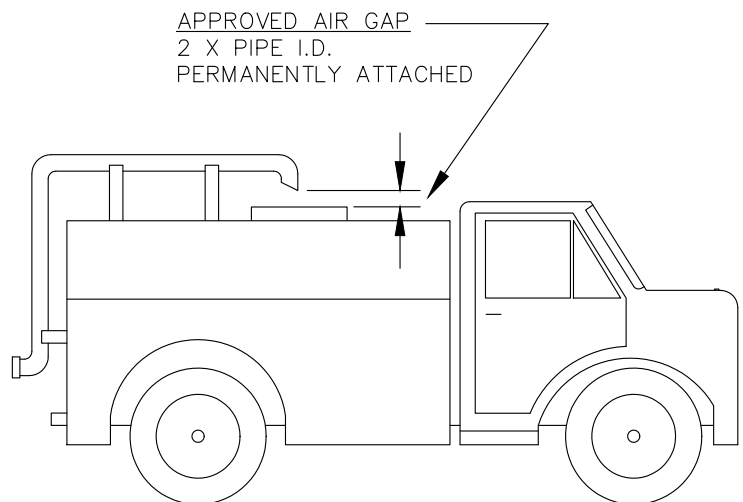
DWG. NO. W-10

HYDRANT USE



HYDRANT USE PROCEDURES:

1. USER MUST HAVE A VALID "HYDRANT METER/WATER PURCHASE AGREEMENT" FROM KING COUNTY WATER DISTRICT NO. 20 IN THEIR POSSESSION.
2. NOTIFY THE DISTRICT SHOP AT (206) 243-3990, BEFORE CONNECTING TO HYDRANT.
3. THERE SHALL BE AN ACCEPTABLE WASHINGTON STATE APPROVED "BACKFLOW DEVICE" WHEN REQUIRED. THE BACKFLOW DEVICE MUST HAVE BEEN TESTED WITHIN THE PREVIOUS YEAR BY A CERTIFIED BACKFLOW TESTER. THE DISTRICT SHALL BE FURNISHED A COPY OF THE TESTING REPORT.
4. WITH AN APPROVED "AIR GAP", THERE SHALL BE AN AUXILIARY VALVE ATTACHED TO THE 2 1/2" HOSE PORT OF THE HYDRANT PROVIDED BY THE PERMIT HOLDER.
5. OPENING AND CLOSING OF HYDRANT VALVE SHALL BE WITH AN ACCEPTABLE HYDRANT WRENCH DESIGNED TO RECEIVE THE 5-SIDED NUT.
6. THE HYDRANT VALVE SHALL BE FULLY OPENED AND THE WATER USE CONTROLLED EXCLUSIVELY BY THE AUXILIARY VALVE.
7. THE AUXILIARY VALVE SHALL BE OPERATED IN SLOW MANNER TO PREVENT UNDUE EXCESSIVE PRESSURE ON THE WATER SYSTEM.
8. BACKFLOW DEVICE AND/OR METER ASSEMBLY SHALL BE PROPERLY SUPPORTED WITH SUPPORTS PROVIDED BY AGREEMENT HOLDER.
9. ANY VIOLATION OF ANY OF THE ABOVE SHALL CONSTITUTE TERMINATION OF WATER USE AGREEMENT AND USER TO BE SUBJECT TO A FINE AND/OR FORFEIT OF DEPOSIT.
10. IF UNABLE TO OPERATE OR CLOSE THE HYDRANT PROPERLY, CALL THE DISTRICT IMMEDIATELY FOR ASSISTANCE AT (206) 243-3990
11. WATER FROM HYDRANTS WITHIN THE DISTRICT CANNOT BE USED OUTSIDE THE DISTRICT BOUNDARIES. VIOLATIONS ARE SUBJECT TO LOSS OF WATER USE PERMITS AND MONETARY FINES.
12. THE UNDERSIGNED USER IS EXPERIENCED AND QUALIFIED TO PROPERLY OPERATE A FIRE HYDRANT.



SIGNED _____

DATE _____



PACE Engineers
11255 Kirkland Way, Suite 300
Kirkland, WA 98033
p. 425.827.2014
www.paceengrs.com

STANDARD DETAIL FIRE HYDRANT USE REQUIREMENTS

PLOTTING DATE 3-06-19	DRAWN LC	CHECKED PP	APPROVED	DISTRICT
PLOTTING SCALE NTS	FILE NAME W-DTL-11	DATE APPROVED		



DWG. NO. W-11

METER BOX
 MID STATES HDPE PLASTIC
 MSBCF1324 - 12 WITH
 DUCTILE IRON READING LID.

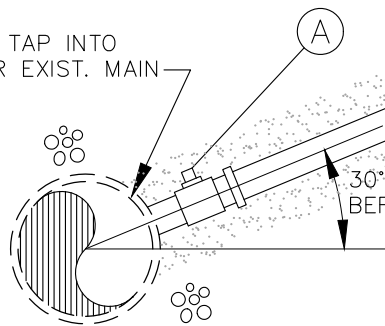
WATER METERS:
 MODEL AS REQUIRED BY DISTRICT
 SUPPLIED BY DEVELOPER

SENSUS:
 IPERL (LF 1 IPERL 100CF SM 6 TRPL 2W)
 SR2 (LF 1 SR2 TRPL 100CF 20 BC LH)

BADGER: M55 1" METER, NSF61

BEDDING MATERIAL: SAND,
 6" MIN. AROUND SERVICE
 LINE AND CORPORATION
 STOP.

DIRECT TAP INTO
 NEW OR EXIST. MAIN



NOTE:
 150' MAXIMUM FROM METER TO
 BUILDING UNLESS OTHERWISE
 DIRECTED BY DISTRICT.

- (A) CORPORATION STOP MUELLER H15008 OR FORD F1000
- (B) 1" COPPER TUBING ASTM B88 TYPE K
- (C) LOCK WING ANGLE METER VALVE MUELLER H14258 OR FORD KV 43-332WQ AND KV 43-444WQ
- (D) WATER METER MEASURING IN CCF SUPPLIED BY DEVELOPER
- (E) COUPLING AS REQUIRED
- (F) SENSUS MXU (M520M-F1-TC-X-E-MI 1P PIT W-ID/LD)
- (G) CONNECTION TO APPROVED BACKFLOW DEVICE. BACKFLOW REQ. FOR ALL CONNECTIONS

NOTES:

1. BACKFILL SHALL BE FIRMLY COMPACTED UNDER CORPORATION STOP AND COPPER TUBING IN THE WATERMAIN TRENCH AREA.
2. USE A PIPE BENDER OR FORD BENDS.
3. ALL SERVICES REQUIRE BACKFLOW PREVENTION WITHIN 3' OF METER.



PACE Engineers
 11255 Kirkland Way, Suite 300
 Kirkland, WA 98033
 p. 425.827.2014
 www.paceengrs.com

STANDARD DETAIL 1" WATER SERVICE

PLOTTING DATE 9-19-23	DRAWN LC	CHECKED PP	APPROVED	DISTRICT
PLOTTING SCALE NTS	FILE NAME W-DTL-12	DATE APPROVED		



DWG. NO. W-12

WATER METER (CCF)
 SUPPLIED BY DEVELOPER
 SENSUS:
 1½" LF 1.5 OMR2 MNCS 13L 100CF AMR
 2" LF 1.5 OMR2 MNCS 17L 100CF AMR
 BADGER:
 1½" M120 1½" NSF61 METER
 2" M120 1½" NSF61 METER

METER BOX
 1½" - 2" MID STATES HDPE PLASTIC
 MSBCF1730- 12 (OR
 APPROVED EQUAL)
 WITH DUCTILE IRON
 READING LID.

14 GAUGE LOCATING
 WIRE

STRAIGHT BRASS COUPLING,
 MIPx PJ
 OR STREET ELL AND MIPx PJ
 TO DISTRICT WATER

METER SETTER
 1½" - FORD VH76-12B-11-66
 2" - FORD VH87-12B-11-77
 OR
 1½" - MUELLER H1423-2-01x12"
 2" - MUELLER H1423-2-01x12"

ANGLE VALVE

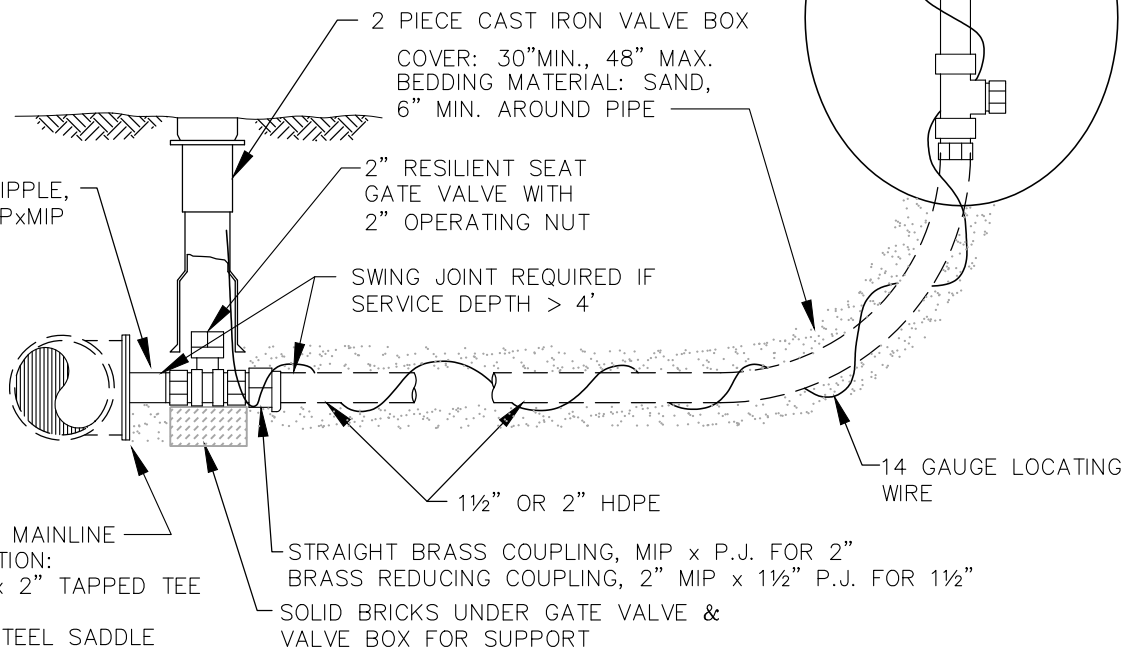
ANGLE VALVE

9" - 12"

PLUG, MIP

PLUG, MIP
 TO SERVE
 CUSTOMER

SEE DETAIL



2" BRASS NIPPLE,
 6" LONG, MIPxMIP

2 PIECE CAST IRON VALVE BOX
 COVER: 30" MIN., 48" MAX.
 BEDDING MATERIAL: SAND,
 6" MIN. AROUND PIPE

2" RESILIENT SEAT
 GATE VALVE WITH
 2" OPERATING NUT

SWING JOINT REQUIRED IF
 SERVICE DEPTH > 4'

14 GAUGE LOCATING
 WIRE

1½" OR 2" HDPE

CONNECTION TO MAINLINE
 NEW CONSTRUCTION:
 MAINLINE SIZE x 2" TAPPED TEE
 EXISTING MAIN:
 2" STAINLESS STEEL SADDLE

STRAIGHT BRASS COUPLING, MIP x P.J. FOR 2"
 BRASS REDUCING COUPLING, 2" MIP x 1½" P.J. FOR 1½"
 SOLID BRICKS UNDER GATE VALVE &
 VALVE BOX FOR SUPPORT

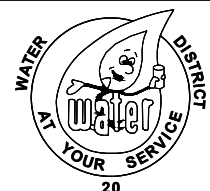
NOTE: ALL SERVICES REQUIRE BACKFLOW PREVENTION WITHIN 3' OF METER.



PACE Engineers
 11255 Kirkland Way, Suite 300
 Kirkland, WA 98033
 p. 425.827.2014
 www.paceengrs.com

STANDARD DETAIL 1-1/2" AND 2" WATER SERVICE

PLOTTING DATE 9-19-23	DRAWN LC	CHECKED PP	APPROVED	DISTRICT
PLOTTING SCALE NTS	FILE NAME W-DTL-13	DATE APPROVED		



DWG. NO. W-13

FILE NAME: L:\CAD\DETAILS\Districts\WD_20\Std_Details\W-DTL-13.dwg

USER: Aaron Jackson

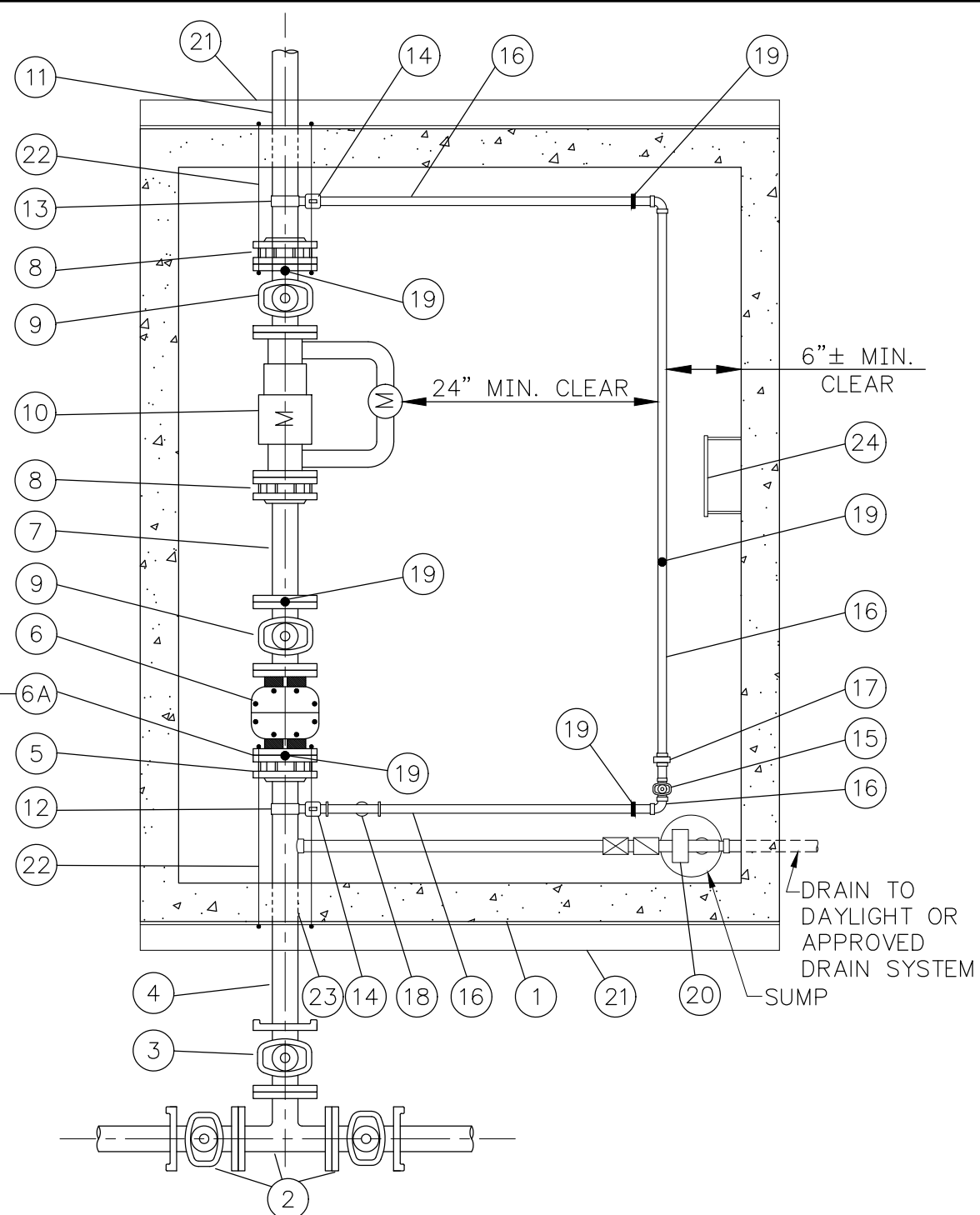
PLOTTING DATE: 10/4/2023 1:19 PM

FILE NAME: L:\CAD\DETAILS\Districts\WD 20\Std Details\W-DTL-14&15.dwg

USER: Aaron Jackson

PLOTTING DATE: 10/4/2023 1:48 PM

3" SERVICE ONLY



NOTES:

1. THE KNOCKOUTS IN THE VAULT SHALL BE FULL WIDTH. KNOCKOUT 2' ABOVE THE VAULT FLOOR TO ALLOW ACCEPTABLE INSTALLATION OF THE PIPE.
2. FINAL VAULT TOP AND COVER SHALL BE SUBMITTED TO THE DISTRICT FOR APPROVAL ON A CASE BY CASE BASIS.
3. INSTALL LINK-SEAL WHERE PIPE TRANSITIONS THROUGH VAULTS.
4. ALL SERVICES REQUIRE BACKFLOW PREVENTION - REFER TO STD. DWG. NO. 16 FOR A DOUBLE CHECK VALVE ASSEMBLY.

SHEET 1 OF 2



PACE Engineers
 11255 Kirkland Way, Suite 300
 Kirkland, WA 98033
 p. 425.827.2014
 www.paceengrs.com

STANDARD DETAIL 3", 4" AND 6" WATER SERVICE

PLOTTING DATE 9-19-23	DRAWN LC	CHECKED PP	APPROVED	DISTRICT
PLOTTING SCALE NTS	FILE NAME W-DTL-14&15	DATE APPROVED		



DWG. NO. W-14

MATERIAL LIST

		SERVICE SIZE		
		3"	4"	6"
1	UTILITY VAULT TOP SECTION * COVER	676LA 676TL 4242C 44-332P	676LA 676TL 4242C 44-332P	687LA 687TL 4242C 44-332P
2	MAINLINE TEE, FLxFL 2-MAINLINE GATE VALVES, FLxMJ	SIZE BASED ON MAINLINE DIAMETER		
3	GATE VALVE, FLxMJ	4"	4"	6"
4	D.I. PIPE, LENGTH AS REQUIRED	4"	4"	6"
5	UNI-FLANGE ADAPTER	400 C4	400 C4	400 C6
6	'Y' STRAINER, FLxFL	3"	4"	6"
6A	4"x3" REDUCER, FLxFL	INSTALL UPSTREAM OF STRAINER ON 3" SERVICE ONLY		
7	SPOOL FLxPE, CL. 53 D.I.	L=12"	L=12"	L=15"
8	UNI-FLANGE ADAPTER	400 C3	400 C4	400 C6
9	GATE VALVE, FLxFL	3"	4"	6"
10	SENSUS IPERL METER AND MXU ASSEMBLY, FLxFL	3"x $\frac{5}{8}$ "	4"x1"	6"x1 $\frac{1}{2}$ "
11	D.I. PIPE TO WATER USER, LENGTH AS REQUIRED	3"	4"	6"
12	ROMAC DOUBLE STRAP SADDLE	4"x1"	4"x1"	6"x1"
13	ROMAC DOUBLE STRAP SADDLE	3"x1"	4"x1"	6"x1"
14	CORP STOP FORD FB1700	1"	1"	1"
15	BRASS LOCKING GATE VALVE	1"	1"	1"
16	BRASS PIPE AND FITTINGS AS REQUIRED	1"	1"	1"
17	BRASS UNION	1"	1"	1"
18	STRAINER	1"	1"	1"
19	STANDON PIPE SUPPORT	UNDER #6 STRAINER, #9 GATE VALVES AND #16 BYPASS PIPE		
20	SLOPE DRAIN TO DAYLIGHT WHERE APPLICABLE. INSTALL GCS AUTOMATIC SUMP DRAIN EJECTOR ASSY. MODEL #996633-51-2 IN LIEU OF GRAVITY DRAIN IF VAULT DOESN'T DRAIN.	1 $\frac{1}{4}$ "	1 $\frac{1}{4}$ "	1 $\frac{1}{4}$ "
21	3"x3"x $\frac{3}{8}$ " GALV. ANGLE IRON - 4 REQUIRED, 2 EACH END	L=6'-3"	L=6'-3"	L=6'-8"
22	$\frac{5}{8}$ " DIAM. GALV OR STAINLESS STEEL BOLT FROM FLANGE THROUGH WALL TO ANGLE, LENGTH AS REQUIRED	$\frac{5}{8}$ " ϕ 2 REQ' EACH END	$\frac{5}{8}$ " ϕ 4 REQ' EACH END	$\frac{5}{8}$ " ϕ 4 REQ' EACH END
23	LINK SEALS	SIZE BASED ON MAINLINE DIAMETER		
24	STAINLESS STEEL LADDER	SIZE BASED ON HEIGHT		

* NOTE: FINAL VAULT AND COVER SHALL BE SUBMITTED TO THE DISTRICT FOR FINAL APPROVAL BASED ON A CASE BY CASE BASIS.

PROVIDE GALVANIZED STEEL OR ALUMINUM LADDER W/ 'LADDER UP" EXTENSION.
LADDER TO BE ATTACHED TO SIDE OF HATCH AND VAULT FLOOR.

SHEET 2 OF 2



PACE Engineers
11255 Kirkland Way, Suite 200
Kirkland, WA 98033
p. 425.827.2014
www.paceengrs.com

STANDARD DETAIL 3", 4" AND 6" WATER SERVICE

PLOTTING DATE 10-19-23	DRAWN LC	CHECKED PP	APPROVED	DISTRICT
PLOTTING SCALE NTS	FILE NAME W-DTL-14&15	DATE APPROVED		



DWG. NO.

W-15

FILE NAME: L:\CAD\DETAILS\Districts\WD 20\Std Details\W-DTL-14&15.dwg

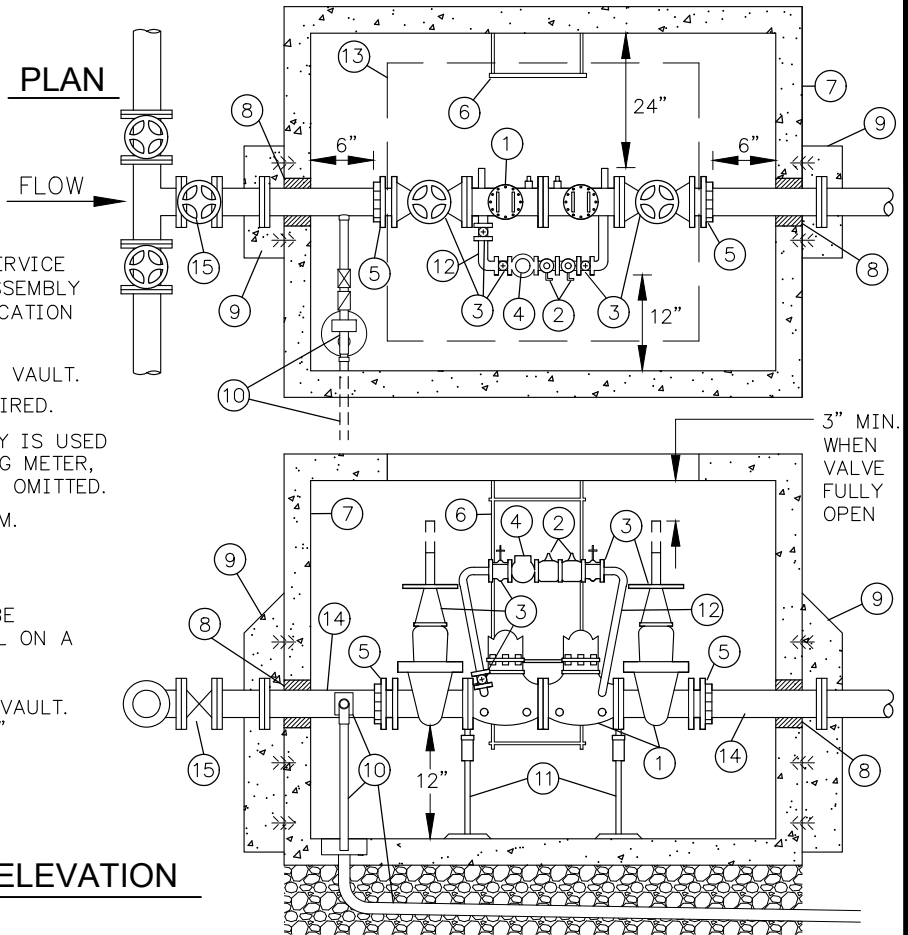
USER: Aaron Jackson

PLOTTING DATE: 10/4/2023 1:48 PM

FILE NAME: L:\CAD\DETAILS\Districts\WD 20\Std Details W-DTL-16.dwg
 USER: Aaron Jackson
 PLOTTING DATE: 10/4/2023 1:19 PM

NOTES:

1. DISTRICT WILL DETERMINE IF REDUCED PRESSURE PRINCIPAL DEVICE IS REQUIRED.
2. ASSEMBLY TO BE MAINTAINED BY PROPERTY OWNER/CUSTOMER & ANNUAL CERTIFICATION REQUIRED.
3. FIRELINE SHALL NOT BE PUT INTO SERVICE UNTIL THE BACKFLOW PREVENTION ASSEMBLY IS APPROVED BY DISTRICT. CERTIFICATION FOLLOWING INSTALLATION REQUIRED.
4. VALVE ASSEMBLY TO BE CENTERED IN VAULT.
5. TEE & 2 MAINLINE VALVES ARE REQUIRED.
6. WHEN DOUBLE CHECK VALVE ASSEMBLY IS USED IN SAME LINE W/ DOMESTIC BUILDING METER, METEDED DETECTOR BYPASS SHALL BE OMITTED.
7. ALL CLEARANCES SHOWN ARE MINIMUM.
8. VAULTS SHALL NOT BE INSTALLED IN AREAS W/ VEHICULAR TRAFFIC.
9. VAULT SIZE AND LID OPTIONS SHALL BE SUBMITTED TO DISTRICT FOR APPROVAL ON A CASE BY CASE BASIS.
10. 4" MINIMUM SIZE PIPE FROM MAIN TO VAULT. FOR 3" DDCV ASSEMBLY INSTALL 4"x3" REDUCER IN VAULT.
11. VAULT SHALL DRAIN TO DAYLIGHT OR APPROVED DRAIN SYSTEM.



- ① STATE APPROVED DOUBLE CHECK DETECTOR ASSEMBLY, COMPLETE W/ (2) RESILIENT SEATED O.S.&Y. VALVES & (4) RESILIENT SEATED TEST COCKS, & BRASS OR COPPER DETECTOR BY-PASS.
- ② STATE APPROVED 3/4" DOUBLE CHECK VALVE ASSEMBLY, COMPLETE W/ (2) RESILIENT SEATED BALL VALVES & (4) RESILIENT SEATED TEST COCKS.
- ③ EACH VALVE SHALL BE MARKED W/ MODEL NUMBER W/ DESIGNATION OF RESILIENT SEAT: SUCH AS "RS" OR "R", WHICH MUST BE CAST, MOLDED, OR AFFIXED ONTO THE BODY OR BONNET OF THE VALVE. ALL FERROUS BODIED VALVES SHALL BE COATED W/ A MIN. OF 4MLS. OF EPOXY OR EQUIVALENT POLYMERIZED COATING.
- ④ 3/4" SENSUS IPERL METER (CUBIC FEET READING) AND MXU
- ⑤ UNI-FLANGE W/ SETSCREWS.
- ⑥ GALVANIZED STEEL OR ALUMINUM LADDER W/ 'LADDER UP" EXTENSION. LADDER TO BE ATTACHED TO SIDE OF HATCH AND VAULT FLOOR.
- ⑦ CONCRETE VAULT W/ A MIN. OF 2, 3'x3' ALUM. DIAMOND PLATE DOORS RATED FOR H2O LOADING, MARKED "WATER". DOORS SHALL BE LW HATCH OR EQUAL W/ SPRING LIFT & RECESSED PADLOCK HASP. PAINTED ALUM. SIGN TO BE MOUNTED ON UNDERSIDE OF HATCH "CONFINED SPACE. ENTRY BY PERMIT ONLY". VAULT SHALL BE EQUAL TO UTILITY VAULT CO. MODEL LISTED IN TABLE BELOW.
- ⑧ LINK SEALS
- ⑨ RESTRAIN INLET/OUTLET PIPE FLANGE WITH CAST-IN ANCHOR BLOCKS WITH REBAR EMBEDDED IN VAULT WALL.
- ⑩ SLOPE DRAIN TO DAYLIGHT WHERE APPLICABLE. INSTALL GCS AUTOMATIC SUMP DRAIN EJECTOR ASSY. MODEL #996633-51-2 IN LIEU OF GRAVITY DRAIN IF VAULT DOESN'T DRAIN.
- ⑪ TWO ADJUSTABLE PIPE STANCHIONS.
- ⑫ ALL PLUMBING FOR BY-PASS TO BE COPPER & BRASS.
- ⑬ ACCESS TO BE CENTERED OVER METER.
- ⑭ CL. 52 D.I., M.J. W/ RETAINER GLANDS.
- ⑮ TEE & THREE VALVES SHALL BE INSTALLED AT MAIN. SIZE TO FIT.

SIZE	UTIL. VAULT CO MODEL	UTIL. VAULT CO. COVER
3"	675-WA	675-TL2-332P
4"	675-WA	675-TL2-332P
6"	675-WA	675-TL2-332P
8"	687-LA	687-TL2-332
10"	5106-LA	5106-TL3-332



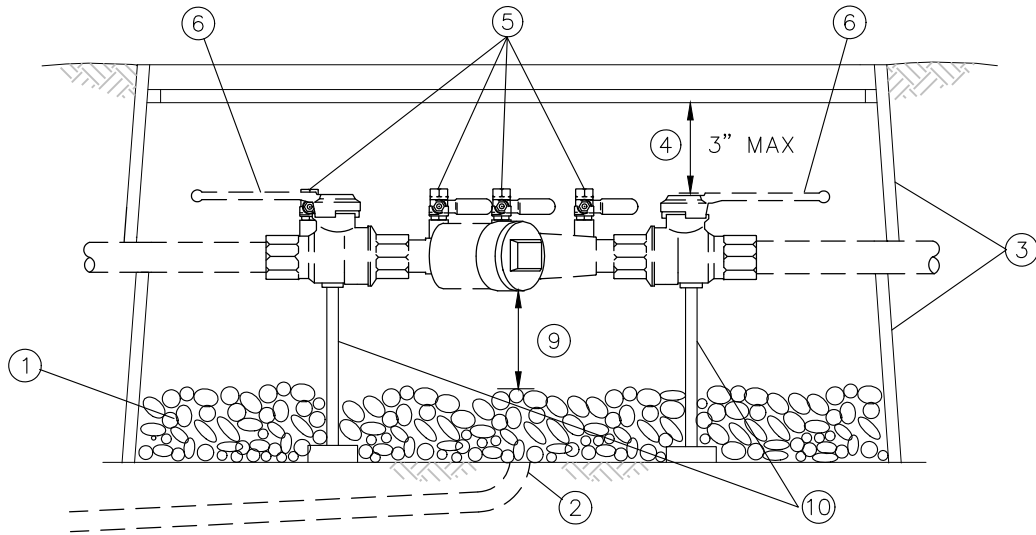
PACE Engineers
 11255 Kirkland Way, Suite 300
 Kirkland, WA 98033
 p. 425.827.2014
 www.paceengrs.com

STANDARD DETAIL 3" OR LARGER DOUBLE DETECTOR CHECK ASSEMBLY

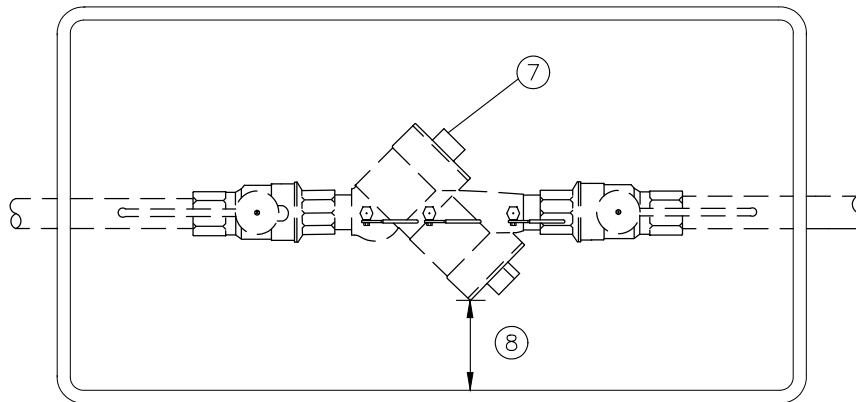
PLOTTING DATE 10-19-23	DRAWN	CHECKED	APPROVED	DISTRICT
PLOTTING SCALE NTS	FILE NAME W-DTL-16	DATE APPROVED		DWG. NO. W-16



DWG. NO. W-16



SECTION



PLAN

- ⊛ MUST BE INSTALLED WITHIN 3' DOWNSTREAM OF A WATER METER FOR A STANDARD WATER SERVICE.
- ⊛ INSTALL ACCORDING TO MANUFACTURER'S SPECIFICATIONS.
- ① 1" ROUND WASHED GRAVEL BY 6" DEEP ON BOTTOM OF BOX OR
- ② DRAIN TO DAY LIGHT
- ③ ENCLOSE 1" & SMALLER D.C.V.A. IN MID STATES 1324-18 BOX. FOR 1½" AND 2" USE MID STATES 1730-18 BOX. MUST HAVE REMOVABLE COVER.
- ④ MAXIMUM OF 3" DISTANCE BETWEEN UNDERSIDE OF LID AND HIGHEST POINT OF DEVICE.
- ⑤ MUST INCLUDE (4) RESILIENT SEATED TESTCOCKS WITH PLUGS VALVES. TESTCOCKS SHOULD BE IN A VERTICAL ORIENTATION TO ALLOW FOR TESTING
- ⑥ THE D.C.V.A. MUST INCLUDE (2) RESILIENT SEATED SHUT-OFF VALVES.
- ⑦ Y-PATTERN D.C.V.A. SHOULD BE INSTALLED ON SIDE. SERIES ASSEMBLY SHOULD BE INSTALLED VERTICALLY.
- ⑧ WHEN TESTCOCKS ARE FACING SIDEWAYS THERE MUST BE A 6" MIN. CLEARANCE BETWEEN THEM AND SIDE OF BOX.
- ⑨ MIN. OF 12" BETWEEN LOWEST POINT OF DEVICE AND DRAIN ROCK.
- ⑩ PROVIDE SUPPORT FOR 2" DEVICES.
- ⑪ FOR FIRE SPRINKLER SYSTEMS LARGER THAN 2", SEE DETAIL SHEET NO. 16 .
- ⊛ OWNER MUST TEST AND CERTIFY PRIOR TO USE.
- ⊛ ASSEMBLY TO BE MAINTAINED BY OWNER AND ANNUAL CERTIFICATION REQUIRED.

FILE NAME: L:\CAD\DETAILS\Districts\WD_20\Std_Details\W-DTL-17.dwg
 PLOTTING DATE: 10/19/2023 8:32 AM USER: Aaron Jackson



PACE Engineers
 11255 Kirkland Way, Suite 300
 Kirkland, WA 98033
 p. 425.827.2014
 www.paceengrs.com

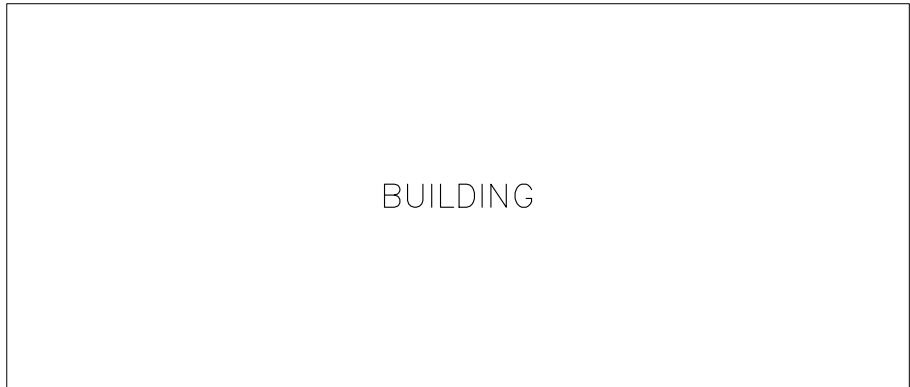
STANDARD DETAIL 2" OR SMALLER DOUBLE CHECK VALVE ASSEMBLY

PLOTING DATE 9-19-23	DRAWN	CHECKED	APPROVED	DISTRICT
PLOTING SCALE NTS	FILE NAME W-DTL-17			DATE APPROVED



20

DWG. NO. W-17



DOMESTIC SERVICE LINE.
INSTALLATION AND MATERIAL
BY OWNER

FIRE SPRINKLER /
IRRIGATION BRANCH
INSTALLATION PER UPC

UNIFORM PLUMBING
CODE (UPC)

TO FIRE SPRINKLER OR IRRIGATION SYSTEM

PREMISE ISOLATION

DOMESTIC BUILDING METER
R/W

APPROVED DOUBLE CHECK VALVE ASSEMBLY
FOR FIRE SPRINKLER/IRRIGATION SYSTEM.
COMBINATION SYSTEM ONLY APPROVED FOR
RESIDENTIAL APPLICATIONS. SEE DETAIL
SHEET NO. 17

STANDARD 1", 1½" OR
2" WATER SERVICE

DCVA TO BE LOCATED
WITHIN 3' OF METER

FOR CONNECTION
SEE STD. WATER SERVICE DETAILS

NOTE:
ASSEMBLY TO BE MAINTAINED BY
OWNER AND ANNUAL CERTIFICATION
REQUIRED.

PLOTTING DATE: 9/19/2023 10:07 AM USER: Aaron Jackson FILE NAME: L:\CAD\DETAILS\Districts\WD_20\Std_Details\W-DTL-18.dwg

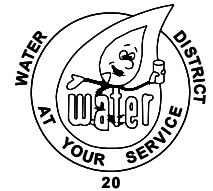


PACE Engineers
 11255 Kirkland Way, Suite 300
 Kirkland, WA 98033
 p. 425.827.2014
 www.paceengrs.com

STANDARD DETAIL

2" AND SMALLER COMBINED DOMESTIC AND FIRE SPRINKLER / IRRIGATION DOUBLE CHECK VALVE ASSEMBLY

PLOTTING DATE 10-19-23	DRAWN	CHECKED	APPROVED	DISTRICT
PLOTTING SCALE NTS	FILE NAME W-DTL-18		DATE APPROVED	



20

DWG. NO. W-18

PRIVATE IRRIGATION SYSTEM

INSTALLATION AND MATERIAL BY OWNER

APPROVED DOUBLE CHECK VALVE ASSEMBLY FOR SEPARATE IRRIGATION SYSTEM. SEE DETAIL SHEET NO. 17. DEDICATED IRRIGATION SERVICE REQUIRED FOR COMMERCIAL PROPERTIES

IRRIGATION SERVICE METER (SEPARATE FROM DOMESTIC)

R/W

STANDARD 3/4" OR 1" WATER SERVICE (SEPARATE FOR 1-1/2" AND LARGER SERVICES)

FOR CONNECTION SEE STD. WATER SERVICE DETAILS

NOTE:

ASSEMBLY TO BE MAINTAINED BY OWNER AND ANNUAL CERTIFICATION REQUIRED.

FILE NAME: L:\CAD\DETAILS\Districts\WD_20\Std_Details\W-DTL-19.dwg

USER: Aaron Jackson

PLOTTING DATE: 9/19/2023 10:08 AM



PACE Engineers
11255 Kirkland Way, Suite 300
Kirkland, WA 98033
p. 425.827.2014
www.paceengrs.com

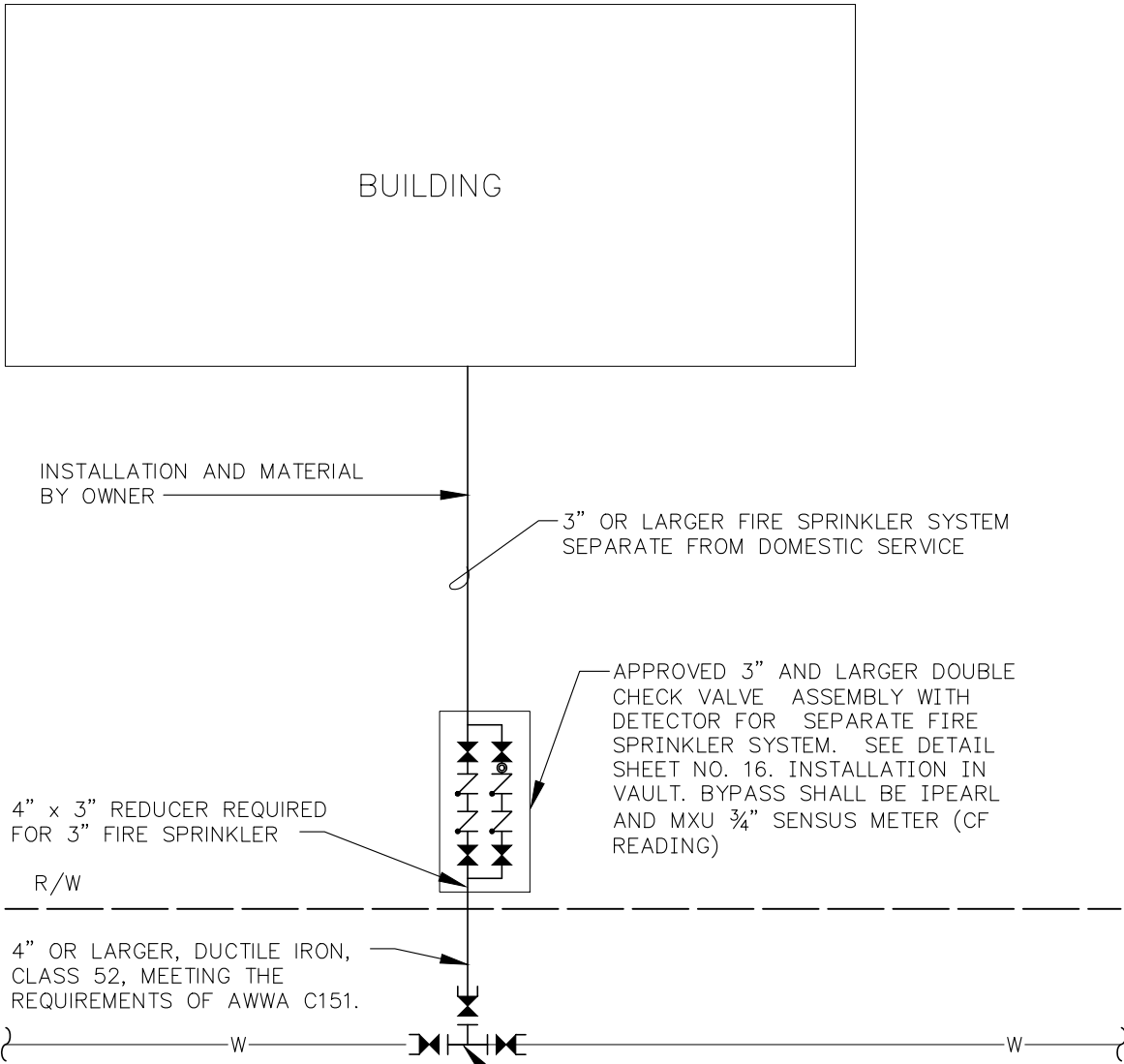
STANDARD DETAIL
1" OR SMALLER OUTSIDE INSTALLED
IRRIGATION SYSTEM SEPARATE FROM
THE DOMESTIC SYSTEM

PLOTTING DATE 3-06-19	DRAWN LC	CHECKED PP	APPROVED	DISTRICT
PLOTTING SCALE NTS	FILE NAME W-DTL-19	DATE APPROVED		



DWG. NO. W-19

PLOTTING DATE: 9/19/2023 10:08 AM USER: Aaron Jackson FILE NAME: L:\CAD\DETAILS\Districts\WD_20\Std_Details\W-DTL-20.dwg



NOTE:
 ASSEMBLY TO BE MAINTAINED BY
 OWNER AND ANNUAL CERTIFICATION
 REQUIRED.

- *FOR NEW CONSTRUCTION
 INSTALL MAIN SIZED x 4" OR LARGER TEE, FLxFL, 2 MAINLINE VALVES, FLxMJ, AND
 4" OR LARGER GATE VALVE, FLxMJ
- *FOR CUT IN TEE
 INSTALL MAIN SIZED x 4" OR LARGER TEE, FLxFL, 2 MAINLINE VALVES, FLxMJ,
 4" OR LARGER GATE VALVE, FLxMJ AND TWO (2) MAIN SIZE SLEEVES, MJ, AND NIPPLES.



PACE Engineers
 11255 Kirkland Way, Suite 300
 Kirkland, WA 98033
 p. 425.827.2014
 www.paceengrs.com

STANDARD DETAIL

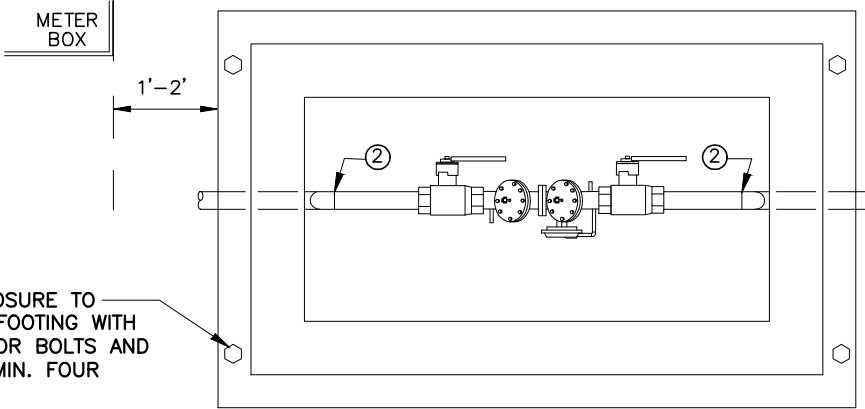
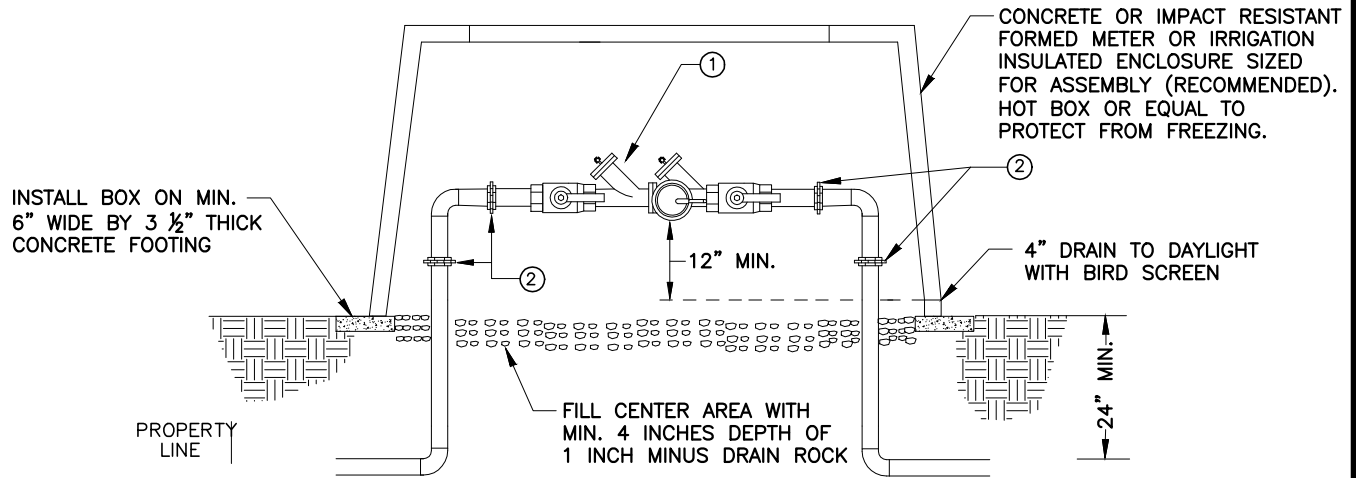
3" OR LARGER COMMERCIAL FIRE SPRINKLER DOUBLE CHECK VALVE ASSEMBLY WITH DETECTOR

PLOTING DATE	DRAWN	CHECKED	APPROVED	DISTRICT
12-27-21				
PLOTING SCALE	FILE NAME			DATE APPROVED
NTS		W-DTL-20		



DWG. NO. W-20

FILE NAME: L:\CAD\DETAILS\Districts\WD 20\Std Details\W-DTL-28.dwg
 USER: Peter Paulsen
 PLOTTING DATE: 10/8/2024 9:49 AM



RPBA ABOVE GROUND INSTALLATION

* RPBA-ENCLOSURE SHALL BE LOCATED IMMEDIATELY DOWNSREAM OF WATER METER BOX PRIOR TO ANY BRANCH CONNECTIONS, WITH NO MORE THAN 1'-2' BETWEEN BOXES. HOT BOX OR EQUAL FOR FREEZE PROTECTION.

NOTES:

- ① BACKFLOW ASSEMBLIES MUST BE SELECTED FROM WASHINGTON STATE DEPARTMENT OF HEALTH LIST OF BACKFLOW ASSEMBLIES APPROVED FOR INSTALLATION IN WASHINGTON STATE.
- ② UNIONS MUST BE INSTALLED VERTICALLY OR HORIZONTALLY
- ③ DIELECTRIC UNIONS MUST BE USED TO SEPARATE DISSIMILAR MATERIALS.
- ④ AFTER INSTALLATION OF BACKFLOW ASSEMBLY, THE CONTRACTOR OR INSTALLER WILL CALL THE DISTRICT FOR AN INSPECTION BY A DISTRICT CROSS-CONNECTION CONTROL SPECIALIST.
- ⑤ RPBA MUST BE PURCHASED AND INSTALLED AS A UNIT. NO MODIFICATIONS TO ANY PART OF THE ASSEMBLY ARE ALLOWED.
- ⑥ FREEZE PROTECTION IS THE RESPONSIBILITY OF THE OWNER AND SHALL NOT INTERFERE WITH OPERATION OR TESTING OF THE ASSEMBLY.
- ⑦ FOLLOWING AN INSPECTION APPROVAL BY THE DISTRICT, THE BACKFLOW ASSEMBLY MUST BE SCHEDULED FOR AN INITIAL TEST BY A WASHINGTON STATE CERTIFIED BACKFLOW ASSEMBLY TESTER. TEST RESULTS ARE TO BE SUBMITTED TO THE DISTRICT BACKFLOW EMAIL (BACKFLOW@KCWD20.COM). THE INITIAL TEST OF THE BACKFLOW ASSEMBLY MAY BE OBSERVED BY A DISTRICT CROSS-CONNECTION CONTROL SPECIALIST. METER MUST BE INSTALLED PRIOR TO TESTING.
- ⑧ PIPING FROM METER TO RPBA SHALL BE COPPER, BRASS, OR POLY TUBING.
- ⑨ THE INSTALLER /DEVELOPER MUST PROVIDE TEST COCK PROTECTION WITH PLUGS, CAPS OR COVERS.
- ⑩ MINIMUM 12" GAP FROM BOTTOM OF RELIEF PORT TO TOP OF DAYLIGHT DRAIN.

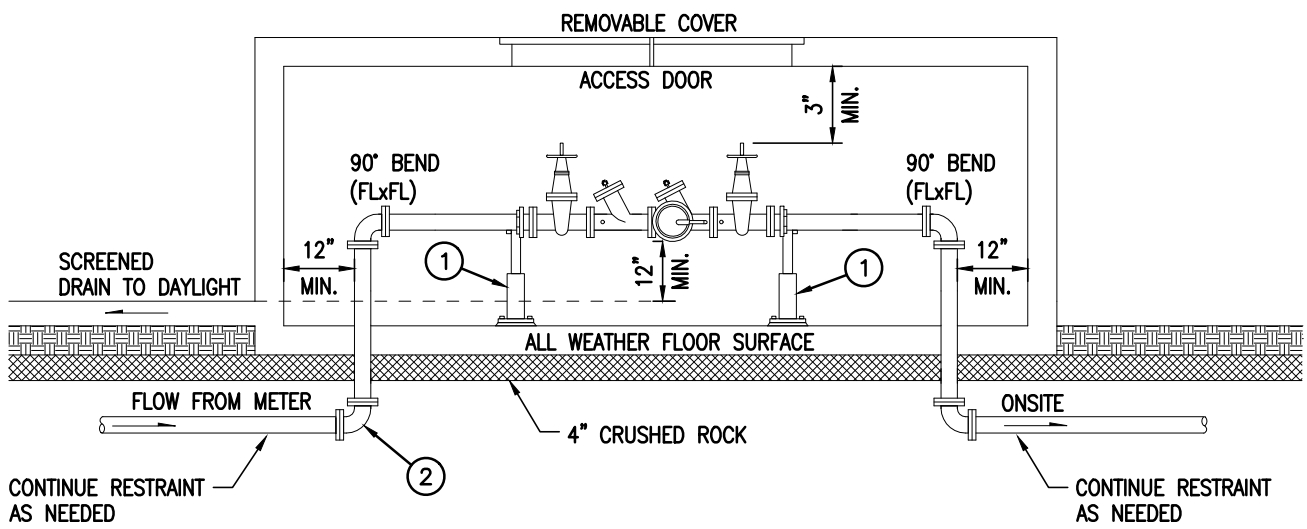
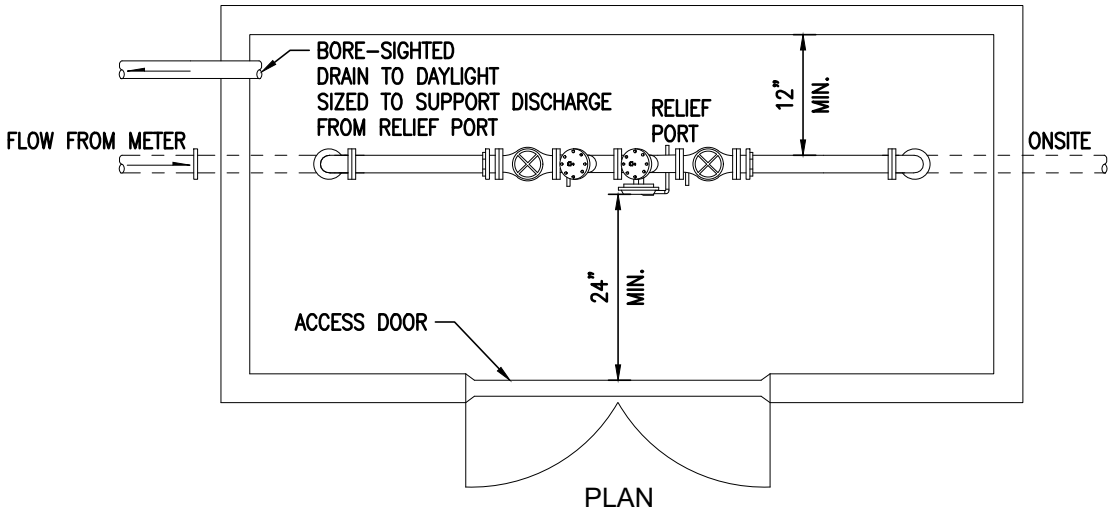


PACE Engineers
 11255 Kirkland Way, Suite 300
 Kirkland, WA 98033
 p. 425.827.2014
 www.paceengrs.com

STANDARD DETAIL REDUCED PRESSURE BACKFLOW ASSEMBLY (3/4" - 2" ASSEMBLIES)



PLOTTING DATE 9-19-23	DRAWN	CHECKED	APPROVED	DISTRICT
PLOTTING SCALE NTS	FILE NAME W-DTL-21	DATE APPROVED		DWG. NO. W-21



NOTES:

- ① ADJUSTABLE PIPE SUPPORT, STANDON MODEL S-89 OR EQUAL & SHALL BE BOLTED TO THE VALVE FLANGE.
- ② USING 90° ELBOWS ON BOTH SIDES OF RPBA, ALL FITTINGS SHALL BE FLANGED OR RESTRAINED.
- ③ AFTER INSTALLATION OF BACKFLOW ASSEMBLY, THE CONTRACTOR OR INSTALLER WILL CALL THE DISTRICT FOR AN INSPECTION BY A DISTRICT CROSS-CONNECTION CONTROL SPECIALIST.
- ④ FOLLOWING AN INSPECTION APPROVAL BY THE DISTRICT, THE BACKFLOW ASSEMBLY MUST BE SCHEDULED FOR AN INITIAL TEST BY A WASHINGTON STATE CERTIFIED BACKFLOW ASSEMBLY TESTER. TEST RESULTS ARE TO BE SUBMITTED TO BSI ONLINE BACKFLOW SOLUTIONS, INC. THE INITIAL TEST OF THE BACKFLOW ASSEMBLY MAY BE OBSERVED BY A CROSS-CONNECTION CONTROL SPECIALIST FROM THE DISTRICT. METER MUST BE INSTALLED PRIOR TO INITIAL TEST.
- ⑤ BACKFLOW ASSEMBLIES MUST BE SELECTED FROM WASHINGTON STATE DEPARTMENT OF HEALTH LIST OF BACKFLOW ASSEMBLIES APPROVED FOR INSTALLATION IN WASHINGTON STATE.
- ⑥ RPBA MUST BE PURCHASED AND INSTALLED AS A UNIT. NO MODIFICATIONS TO ANY PART OF THE ASSEMBLY ARE ALLOWED.
- ⑦ FREEZE PROTECTION IS THE RESPONSIBILITY OF THE OWNER AND SHALL NOT INTERFERE WITH OPERATION OR TESTING OF THE ASSEMBLY.
- ⑧ MUST MAINTAIN 12" MINIMUM AIR GAP FROM BOTTOM OF RELIEF PORT TO TOP OF DAYLIGHT DRAIN.

FILE NAME: L:\CAD\DETAILS\Districts\WD 20\Std Details\W-DTL-22.dwg
 USER: Peter Paulsen
 PLOTTING DATE: 10/8/2024 9:49 AM



PACE Engineers
 11255 Kirkland Way, Suite 300
 Kirkland, WA 98033
 p. 425.827.2014
 www.paceengrs.com

STANDARD DETAIL REDUCED PRESSURE BACKFLOW ASSEMBLY (3" AND LARGER)

PLOTING DATE	9-19-23	DRAWN	CHECKED	APPROVED	DISTRICT
PLOTING SCALE	NTS	FILE NAME	W-DTL-22		DATE APPROVED



DWG. NO. W-22

FILE NAME: L:\CAD\DETAILS\Districts\WD_20\Std_Details\W-DTL-23.dwg
PLOTting DATE: 10/8/2024 10:20 AM USER: Peter Poulsen

Water District²⁰
KING COUNTY

APPROVED
CONSTRUCTION
DRAWINGS: _____ DATE: _____



PACE Engineers
11255 Kirkland Way, Suite 300
Kirkland, WA 98033
p. 425.827.2014
www.paceengrs.com

APPROVAL STAMP

PLOTTING DATE 3-06-19	DRAWN	CHECKED	APPROVED	DISTRICT
PLOTTING SCALE NTS	FILE NAME W-DTL-23	DATE APPROVED		

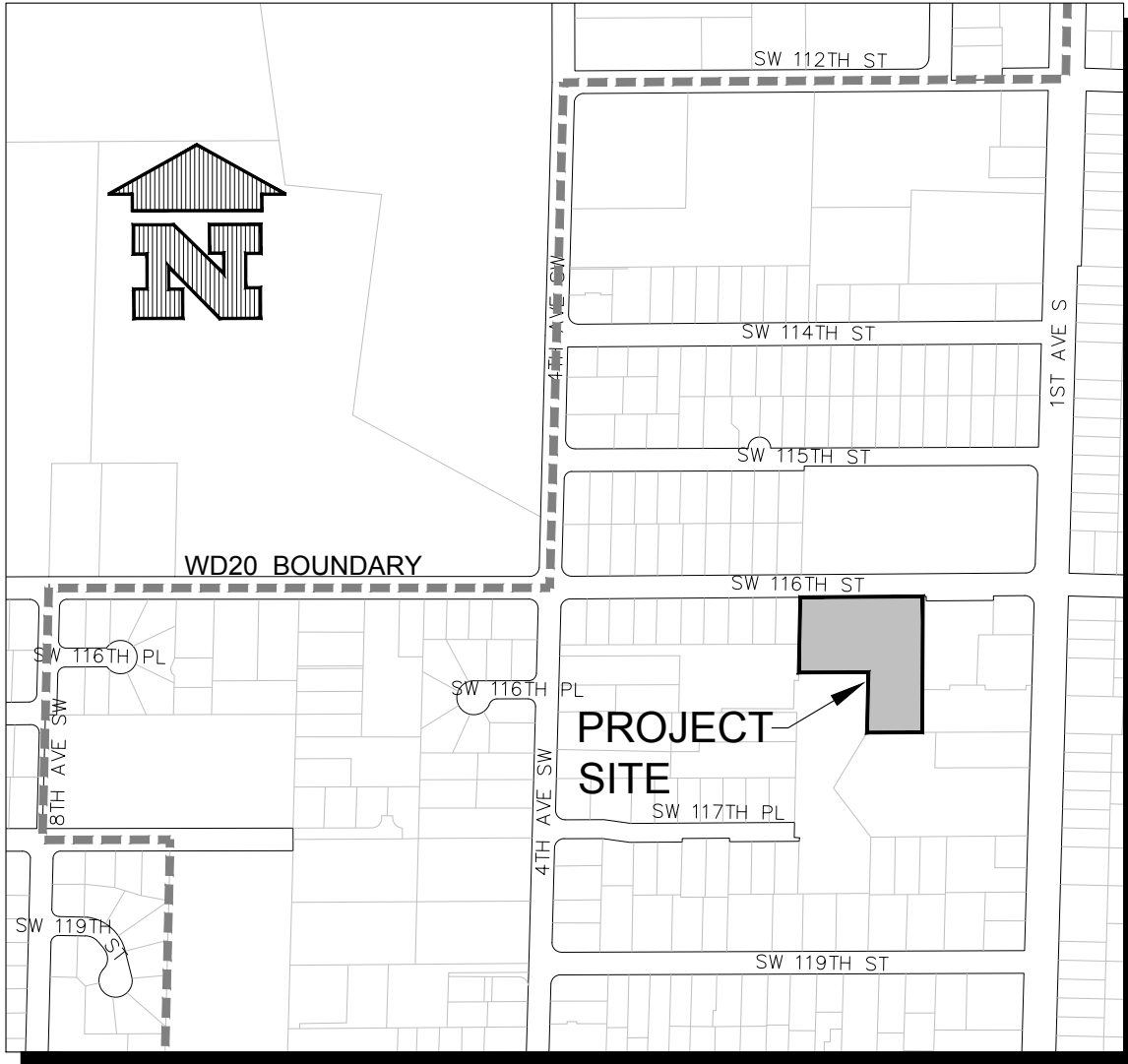


DWG. NO. W-23

FILE NAME: L:\CAD\DETAILS\Districts\WD_20\Std_Details\W-DTL-24.dwg

USER: Peter Poulsen

PLOTTING DATE: 10/8/2024 10:20 AM



PACE Engineers
 11255 Kirkland Way, Suite 300
 Kirkland, WA 98033
 p. 425.827.2014
 www.paceengrs.com

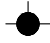
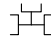








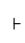

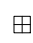
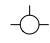


VICINITY MAP (TYPICAL)

PLOTTING DATE 3-06-19	DRAWN	CHECKED	APPROVED	DISTRICT
PLOTTING SCALE NTS	FILE NAME W-DTL-24			DATE APPROVED



DWG. NO. W-24

NOTE: ALL SYMBOLS, TEXT, LINES SHOWN AT 50 SCALE

							
FIRE HYDRANT	TEE (MJ)	GATE VALVE (MJ)	90° BEND (FL)	45° BEND (MJ)	22 1/2° BEND (MJ)	BLOW OFF ASSEMBLY (MJ)	REDUCER (MJ)
							
COUPLING	FLxMJ ADAPTOR	PLUG	WATER METER	EXISTING WATER METER	EXISTING FIRE HYDRANT	EXISTING WATER VALVE	TAX LOT NUMBER

----- WATER EASEMENT (DESIGN)

————— WATER LINE (DESIGN)
P-LINE, WIDTH: 1.8

————— WATER SERVICE

WATER DESIGN TEXT DESIGN TEXT
STYLE: SIMPLEX
HEIGHT: 5

----- EXISTING WATER LINE

SE 240TH ST STREET NAME CALLOUTS
STYLE: ARIAL
HEIGHT: 10

PLAT TEXT PLAT NAME CALLLOUTS
STYLE: HMO
HEIGHT: 10 OR 8

22 EXISTING PLAT LOT NOS.
STYLE: SIMPLEX
HEIGHT: 6

12 PROPOSED PLAT LOT NOS.
STYLE: ARIAL
HEIGHT: 7

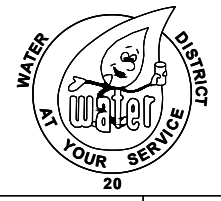
FILE NAME: L:\CAD\DETAILS\Districts\WD_20\Std_Details_W-DTL-25.dwg PLOTTING DATE: 10/8/2024 10:22 AM USER: Peter Poulsen



PACE Engineers
11255 Kirkland Way, Suite 300
Kirkland, WA 98033
p. 425.827.2014
www.paceengrs.com

STANDARD PLAN TEXT, SYMBOLS & LINE TYPES

PLOTTING DATE 3-06-19	DRAWN	CHECKED	APPROVED	DISTRICT
PLOTTING SCALE NTS	FILE NAME W-DTL-25	DATE APPROVED		



DWG. NO. W-25

LEGEND:

- ⊙ FH EXISTING FIRE HYDRANT
- ⊞ WM EXISTING WATER METER
- ⊗ WV EXISTING WATER VALVE
- ⊙→ BO EXISTING WATER BLOW-OFF
- ▣ MR VALVE MARKER POST
- ⊙ GV GAS VALVE
- ▣ TB TELEPHONE BOX
- ⊙ PP POWER POLE
- GUY ANCHOR
- ⊞ RS ROAD SIGN
- ▣ MB MAIL BOX
- ⊙ RE REBAR & CAP
- ⊙ PK PK NAIL

==== 12" CC ===== CONCRETE CULVERT

----- T ----- U.G. TELEPHONE LINE

----- G ----- GAS LINE

----- x x x ----- FENCE

 AP APPLE

 CE CEDAR

 FR FIR

 HK HEMLOCK

 PI PINE

 WW WEEPING WILLOW

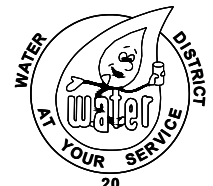
PLOTING DATE: 10/8/2024 10:24 AM USER: Peter Poulsen FILE NAME: L:\CAD\DETAILS\Districts\WD_20\Std_Details\W-DTL-26.dwg



PACE Engineers
11255 Kirkland Way, Suite 300
Kirkland, WA 98033
p. 425.827.2014
www.paceengrs.com

TYPICAL LEGEND

PLOTING DATE 3-06-19	DRAWN	CHECKED	APPROVED	DISTRICT
PLOTING SCALE NTS	FILE NAME W-DTL-26	DATE APPROVED		



DWG. NO. W-26